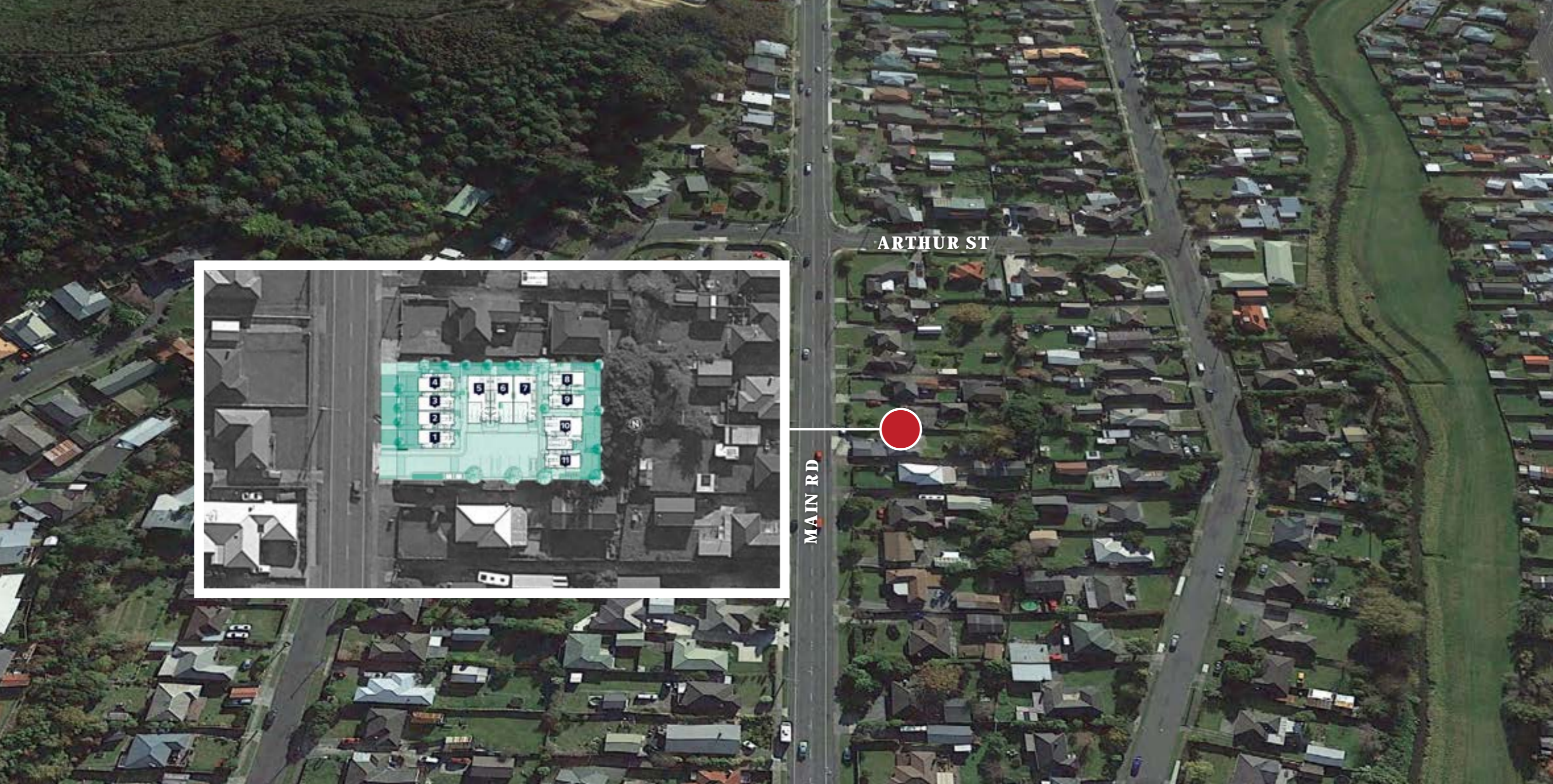




41-43 Main Rd
WAINUIOMATA



Modern and Carefree Living

Welcome to the Main Road Development offering an opportunity for modern and carefree living. Imagine walking into your brand-new home for the first time, the soft new carpet under your feet, double glazed windows throughout, heat pump running creating a warm and cosy environment in winter and a cool home in summer. This could be your reality very soon. Making a purchase on a house that offers low maintenance and carefree living is here.

This new development of 11 two storey family homes comprises a mix of two- or three-bedroom homes, each on their own fee simple title. These homes have been architecturally designed and you will be impressed with their thoughtful layout.

There are 3 different homes to choose from:

- ◆ 2 x 3 Bedrooms, 2.5 Bathrooms and internal access garage.
- ◆ 4 x 2 Bedrooms, 2.5 bathrooms and includes 1 carpark
- ◆ 3 x 2 bedrooms, 1.5 bathrooms and includes 1 carpark & 1 with no carpark.

This development places you right in the heart of Wainuiomata. Enjoy living within a ten minute walk to the main shops, Wainuiomata Swimming Pool, and William Jones Park.

About Wainuiomata



An Idyllic Slice of Kiwi Heartland

Wainuiomata is known for its small-town community feel and is home to the great outdoors and natural feel. Surrounded by hills clad in native bush and alongside the marvelous Wainuiomata River.

The hilly geography makes for fun outdoor activities such as the Remutaka Cycle Trail and Remutaka Forest Park which is made up of a selection of bushwalks amongst lush landscape and birdsong.



Shaped By Wild Forces

Down Coast Road you are greeted by rugged geography along the coastline. Here you'll find earthquake raised terraces, the Baring Head Lighthouse and large colony of 500 seals during winter. A vast coastal reserve which can be explored by foot or horse trek.

Just a Hop to Shop

Hop over the hill into Lower Hutt to access Wellington's best shopping. Queensgate offers over 140 stores all conveniently located under one roof, late night shopping on Thursdays and Fridays, ample free covered-parking, and soon to host the region's first VMAX movie theatre.

Petone's Jackson Street, which runs parallel to the seashore, is a vibrant and diverse range of specialist food importers and producers tucked between boutique shops and vintage outlets.



The Fabric that Knits the Community Together

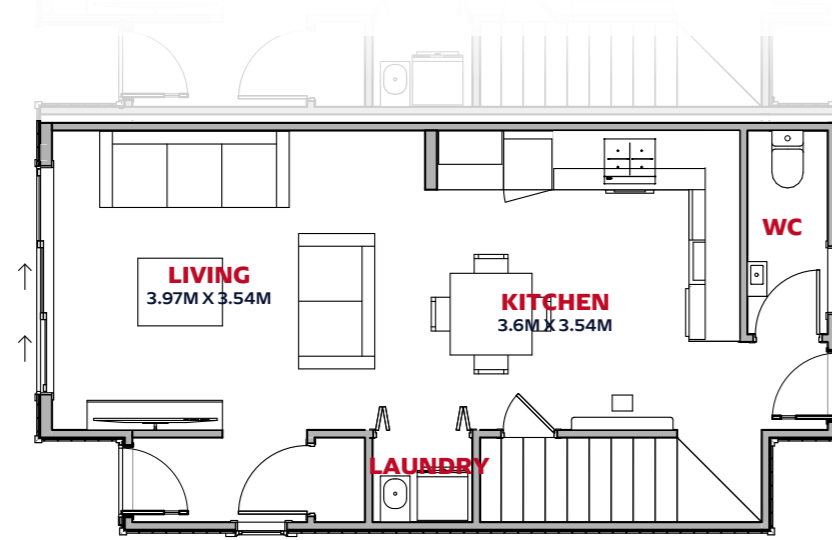
Home to its fair share of rugby union and league stars such as Piri Weepu and Tana Umaga. Sport is a significant part of the community, you can be sure there is no shortage of sports grounds and outdoor recreation options.



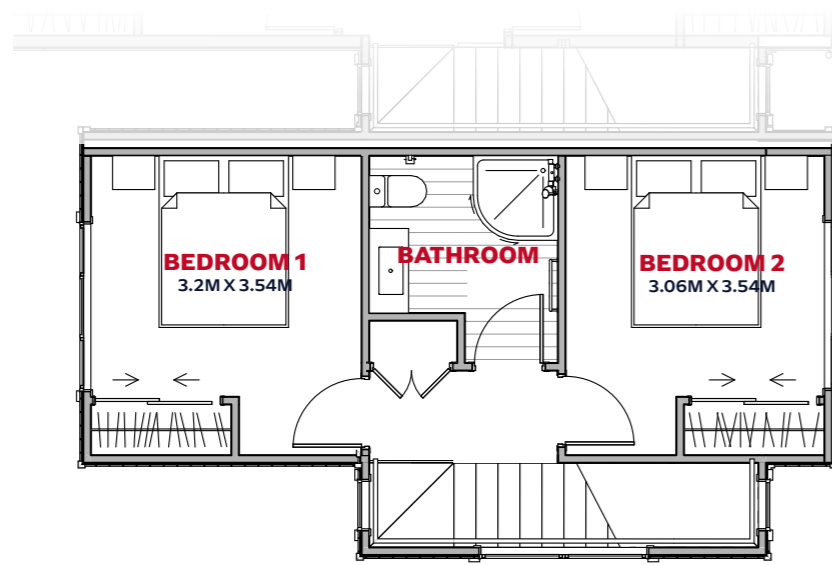


Lot 1

🛏️ 2 | 🍷 1.5 | 🪑 1 | 🏠 81 sqm | 🌳 123 sqm



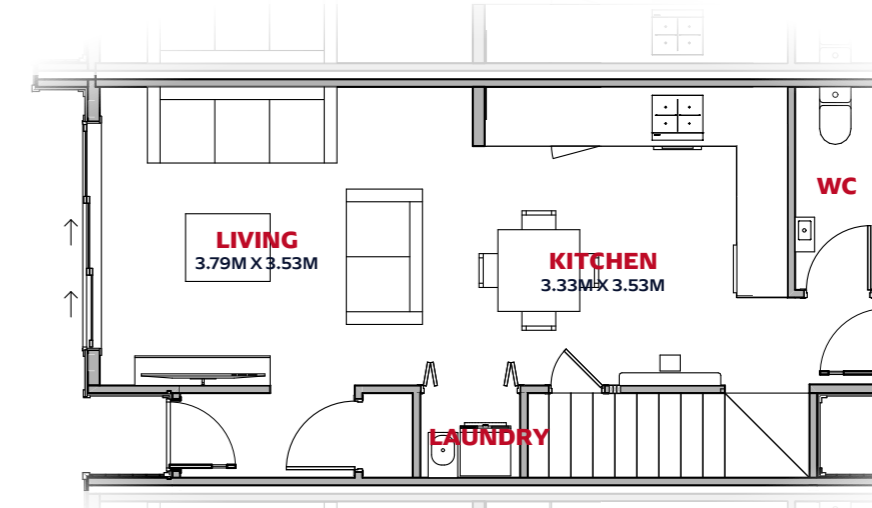
GROUND FLOOR



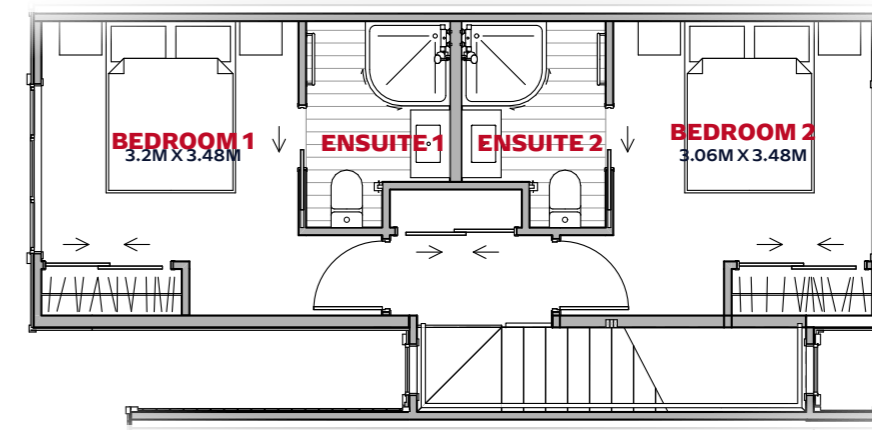
LEVEL ONE

Lot 2

🛏️ 2 | 🍷 2.5 | 🪑 1 | 🚗 1 | 🏠 85 sqm | 🌳 79 sqm



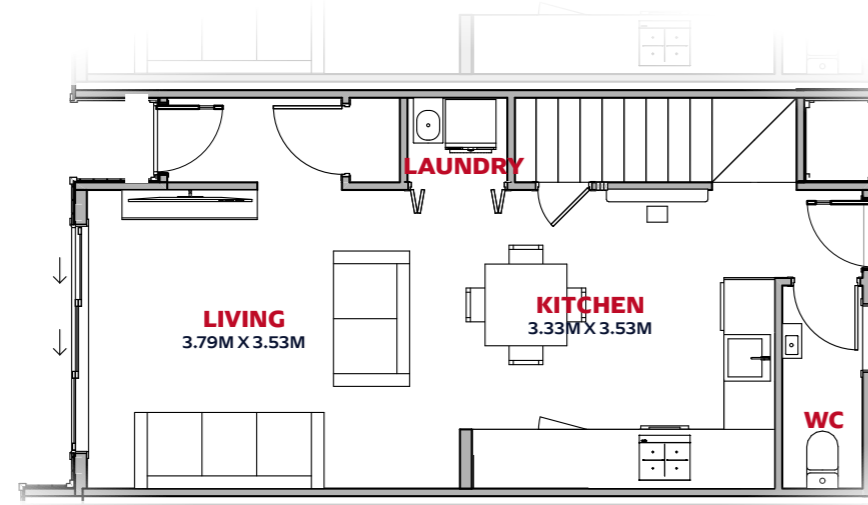
GROUND FLOOR



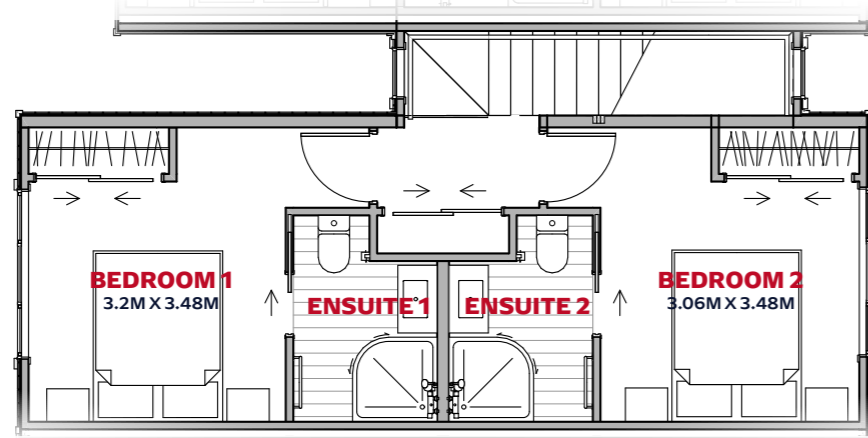
LEVEL ONE

Lot 3

🛏️ 2 | 🍷 2.5 | 🛋️ 1 | 🚗 1 | 🏠 85 sqm | 🌳 79 sqm



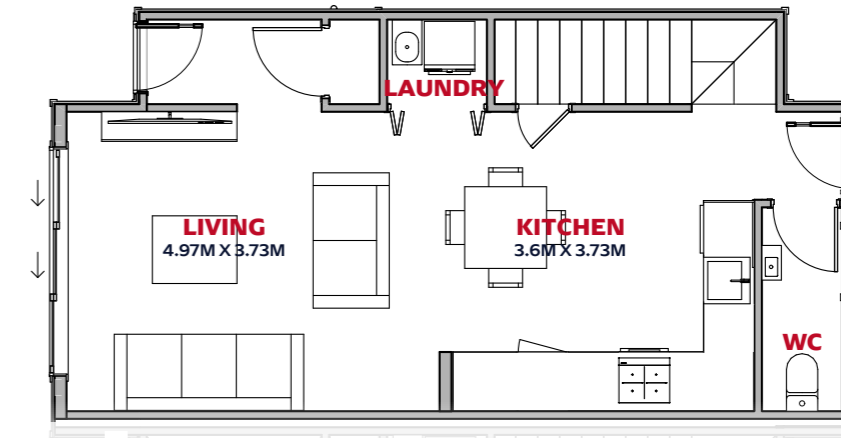
GROUND FLOOR



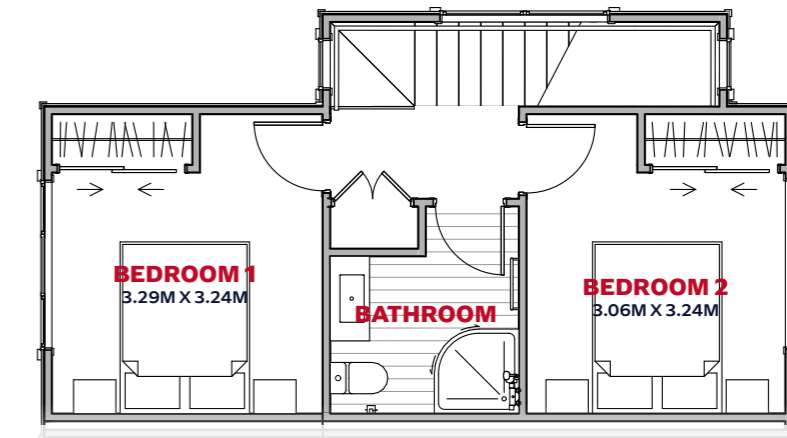
LEVEL ONE

Lot 4

🛏️ 2 | 🍷 1.5 | 🛋️ 1 | 🚗 1 | 🏠 81 sqm | 🌳 85 sqm



GROUND FLOOR

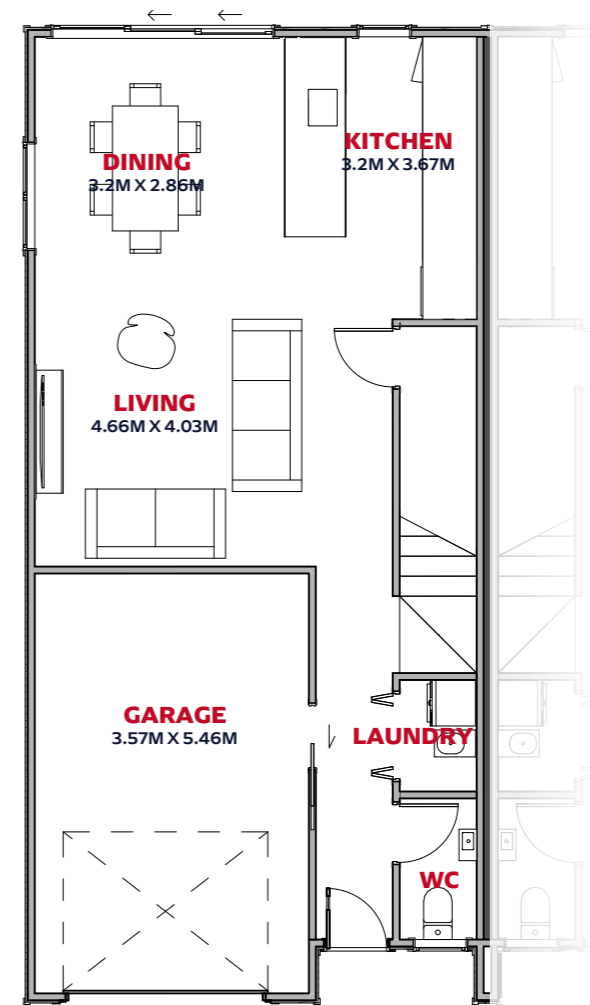


LEVEL ONE

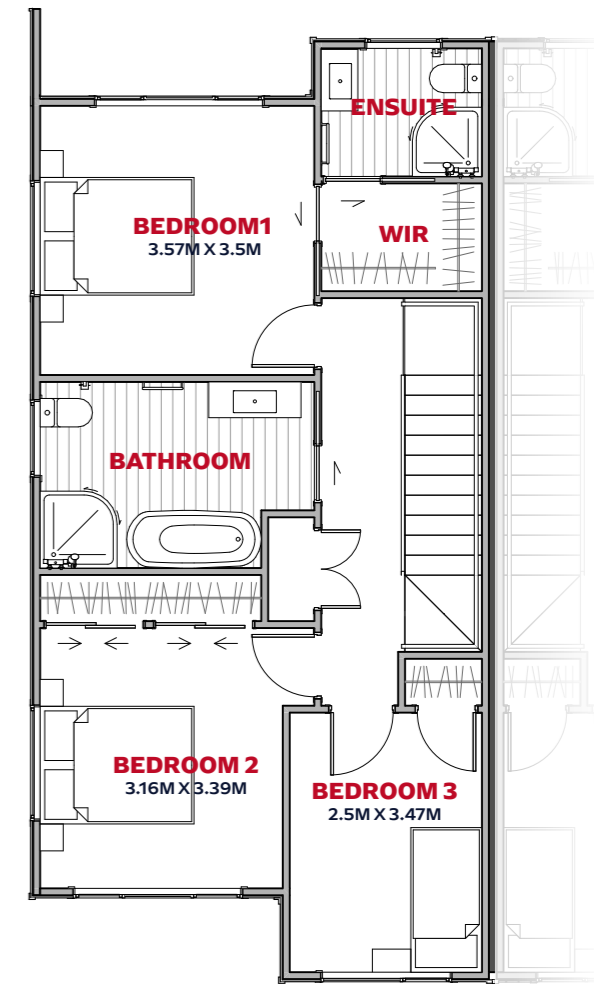


Lot 5

3 |
 2.5 |
 1 |
 1 |
 136 sqm |
 115 sqm



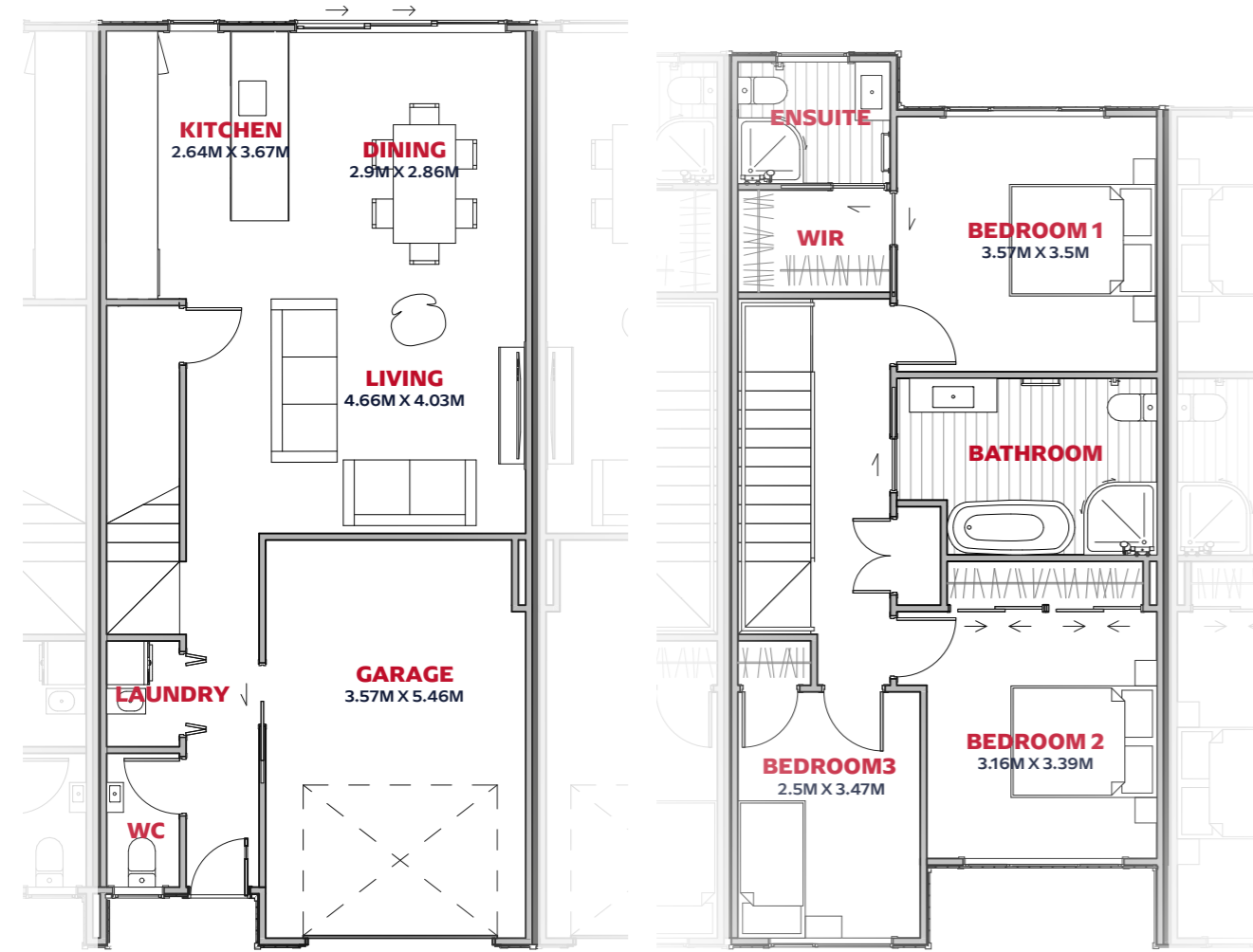
GROUND FLOOR



LEVEL ONE

Lot 6

3 | 2.5 | 1 | 1 | 137 sqm | 101 sqm

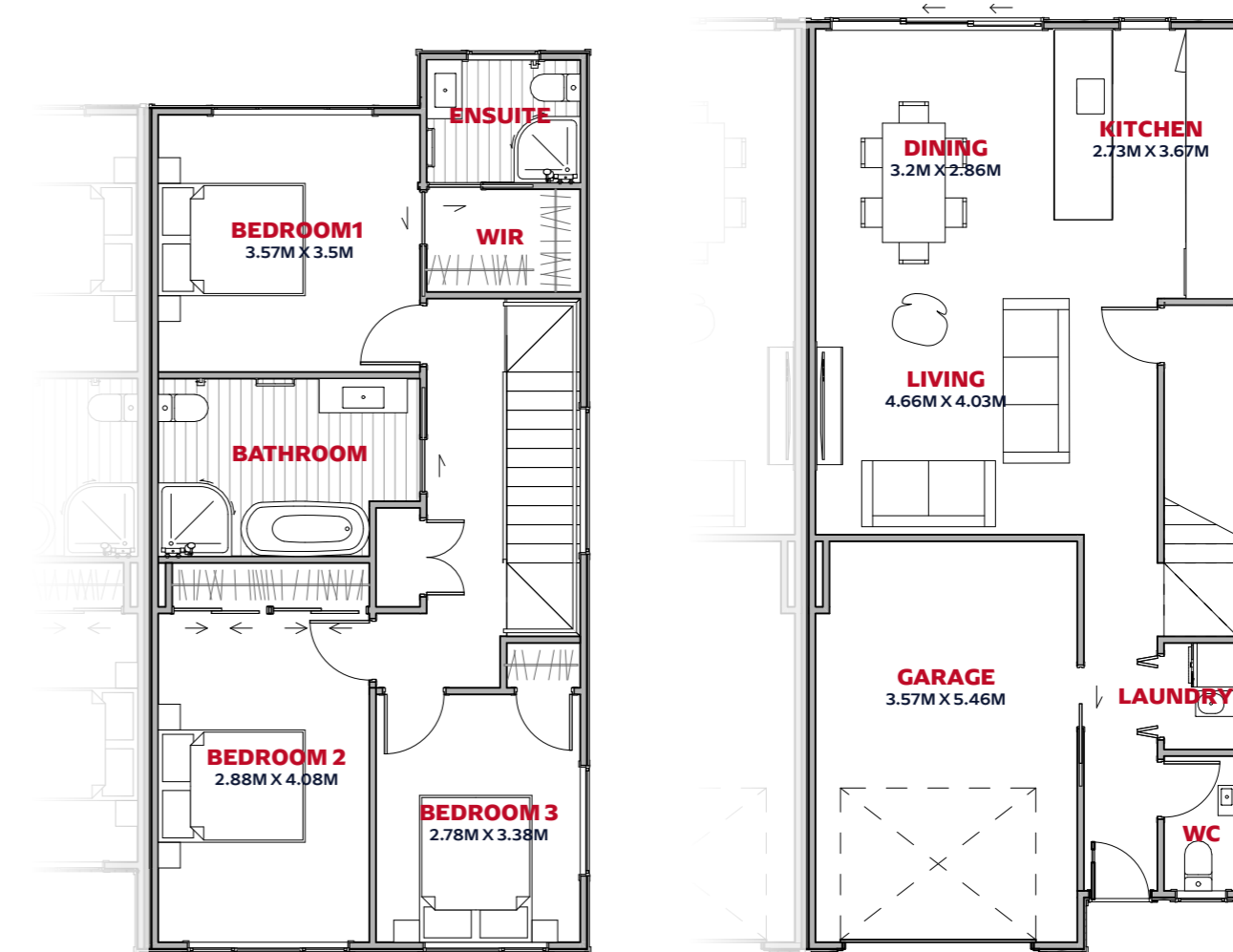


GROUND FLOOR

LEVEL ONE

Lot 7

3 | 2.5 | 1 | 1 | 140 sqm | 103 sqm



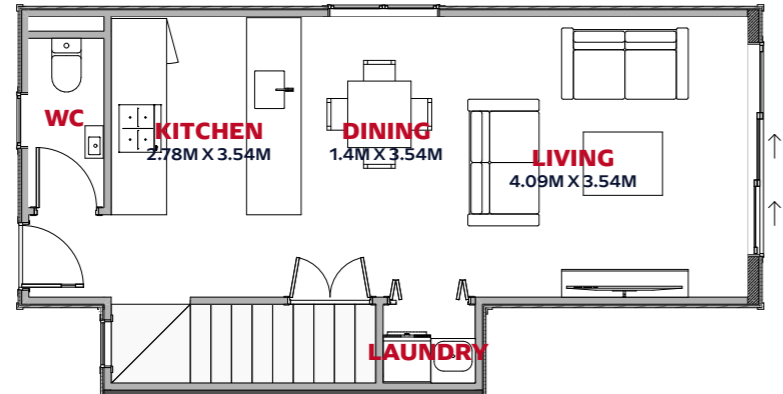
GROUND FLOOR

LEVEL ONE

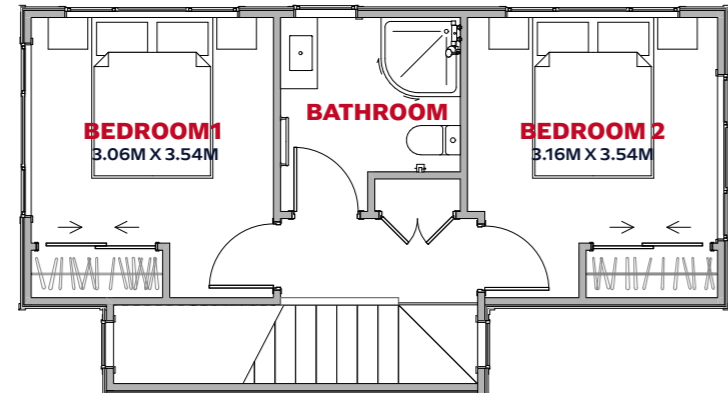


Lot 8

🚗 2 | 🏠 1.5 | 🛏 1 | 🚗 1 | 🏠 78 sqm | 🌳 110 sqm



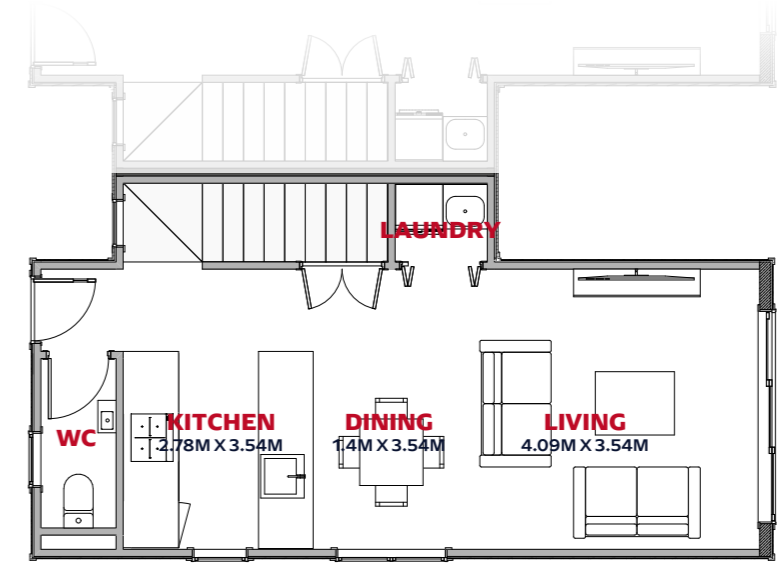
GROUND FLOOR



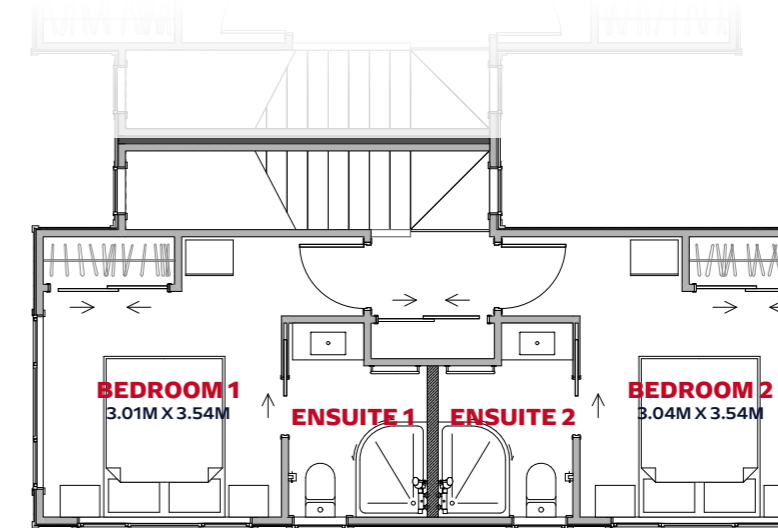
LEVEL ONE

Lot 9

🚗 2 | 🏠 2.5 | 🛏 1 | 🚗 1 | 🏠 82 sqm | 🌳 90 sqm



GROUND FLOOR

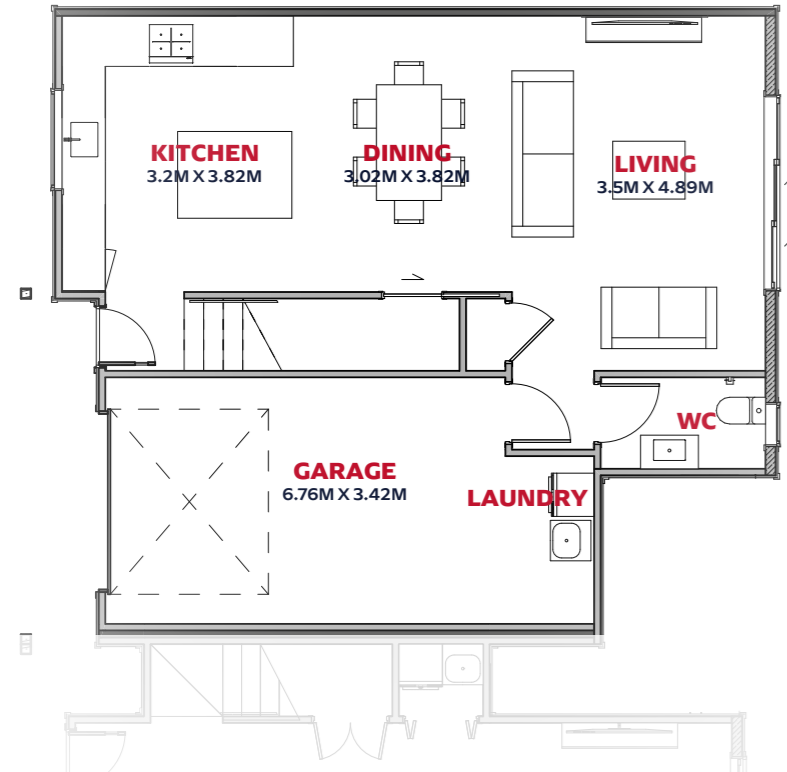


LEVEL ONE

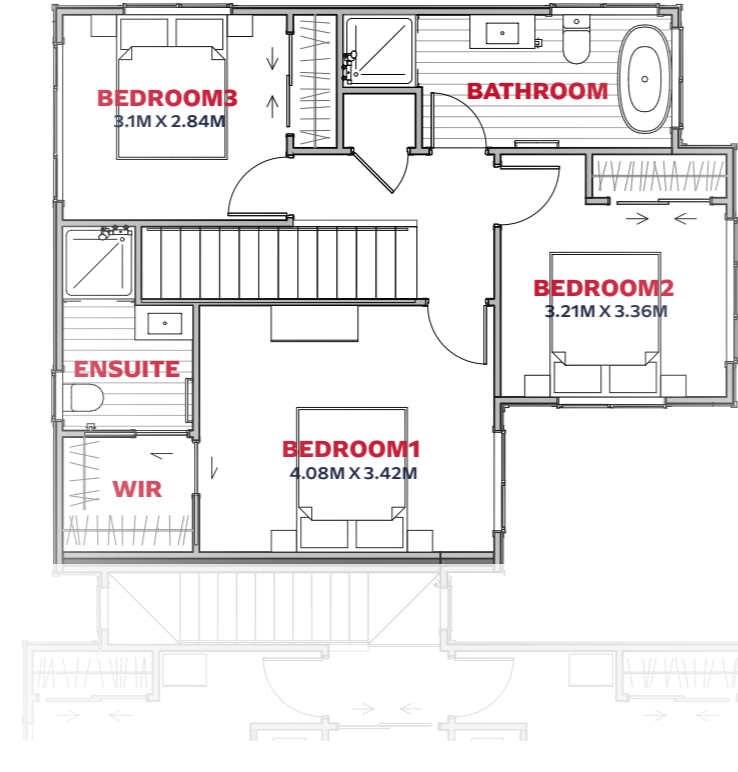


Lot 10

🚗 3 | 🏡 2.5 | 🛏 1 | 🏠 1 | 🏠 144 sqm | 🌳 147 sqm



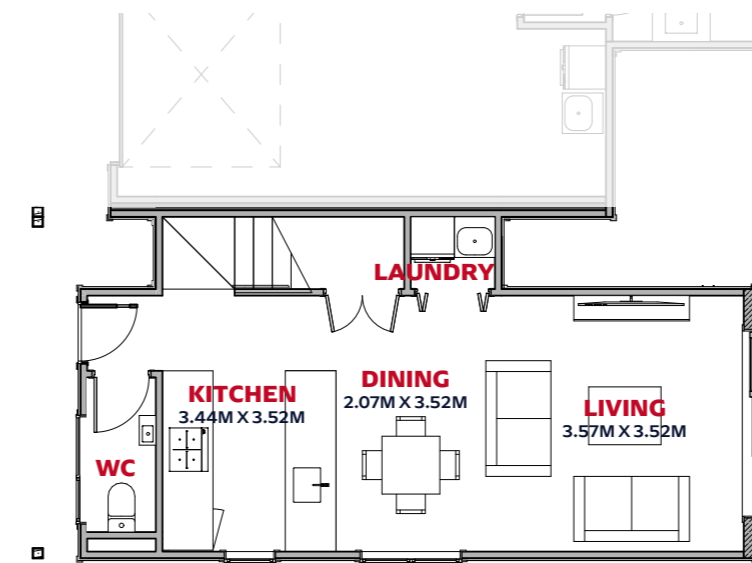
GROUND FLOOR



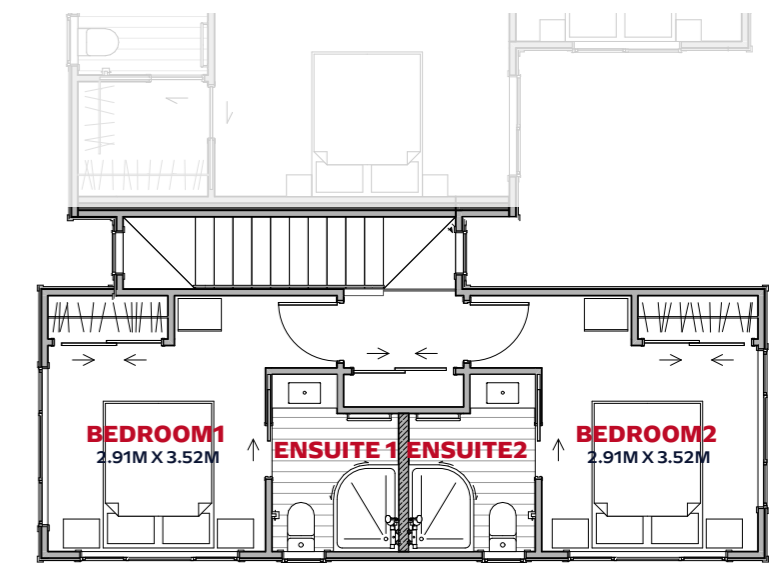
LEVEL ONE

Lot 11

🚗 2 | 🏡 2.5 | 🛏 1 | 🚗 1 | 🏠 82 sqm | 🌳 108 sqm



GROUND FLOOR



LEVEL ONE