



62 Bledisloe Cres

WAINUIOMATA



Bright Outlook on Bledisloe

Four standalone townhouses at 62 Bledisloe Crescent offer outstanding living in the heart of Wainuiomata. These stunning two-storey mono-pitch homes feature high-quality interior living spaces and great outdoor living with gorgeous gardens, patios and decks. Available in sizes from 2 to 4 bedrooms and 81 to 121 square-metres, each with off-street parking. Secure your new home in Wainuiomata today.

These homes are located right in the heart of Wainuiomata. Enjoy living within a 15 minute walk to the main shops, and 5 minute walk to Wainuiomata Swimming Pool, and William Jones Park.

About Wainuiomata



An Idyllic Slice of Kiwi Heartland

Wainuiomata is known for its small-town community feel and is home to the great outdoors and natural feel. Surrounded by hills clad in native bush and alongside the marvelous Wainuiomata River.

The hilly geography makes for fun outdoor activities such as the Remutaka Cycle Trail and Remutaka Forest Park which is made up of a selection of bushwalks amongst lush landscape and birdsong.



Shaped By Wild Forces

Down Coast Road you are greeted by rugged geography along the coastline. Here you'll find earthquake raised terraces, the Baring Head Lighthouse and large colony of 500 seals during winter. A vast coastal reserve which can be explored by foot or horse trek.

Just a Hop to Shop

Hop over the hill into Lower Hutt to access Wellington's best shopping. Queensgate offers over 140 stores all conveniently located under one roof, late night shopping on Thursdays and Fridays, ample free covered-parking, and soon to host the region's first VMAX movie theatre.

Petone's Jackson Street, which runs parallel to the seashore, is a vibrant and diverse range of specialist food importers and producers tucked between boutique shops and vintage outlets.



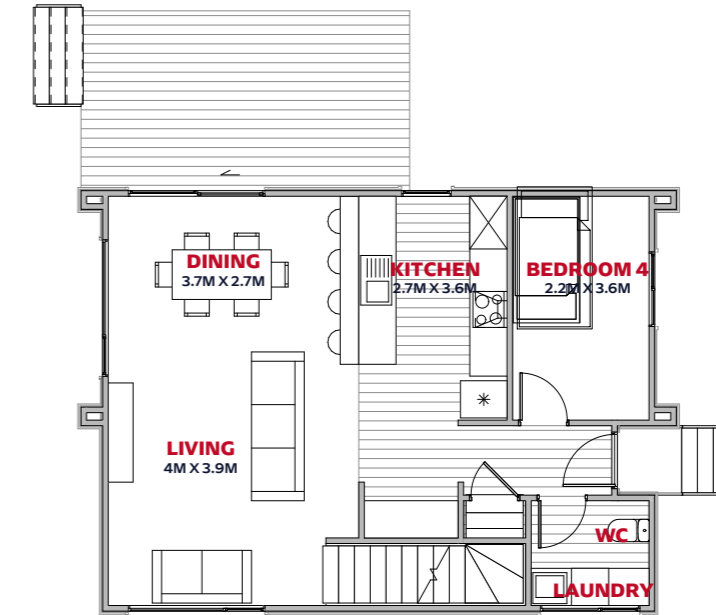
The Fabric that Knits the Community Together

Home to its fair share of rugby union and league stars such as Piri Weepu and Tana Umaga. Sport is a significant part of the community, you can be sure there is no shortage of sports grounds and outdoor recreation options.

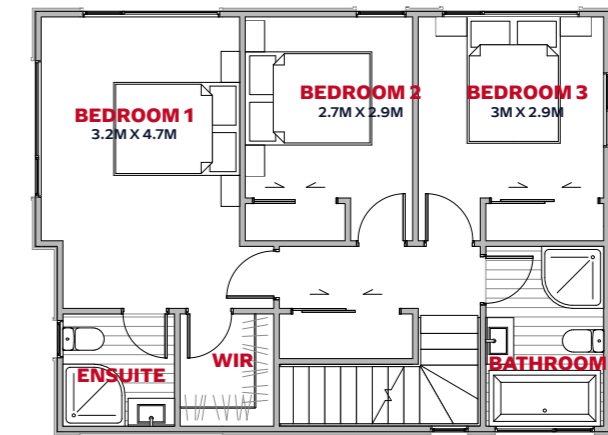


Lot 1

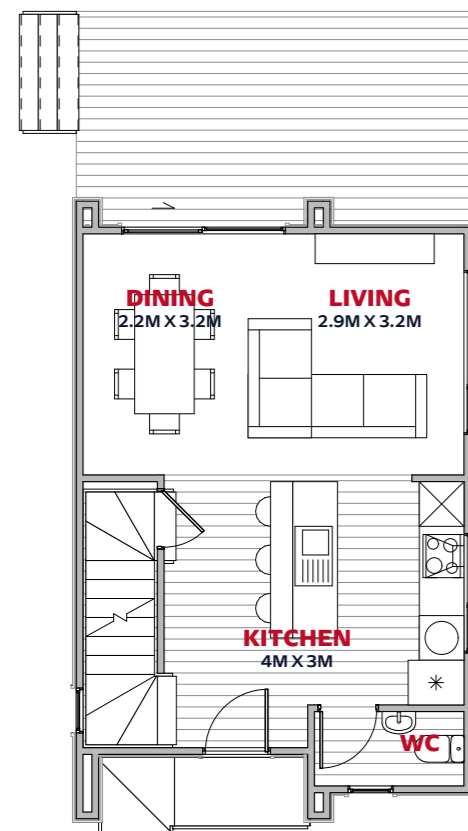
4 | 2.5 | 1 | 1 | 122 sqm | 235 sqm



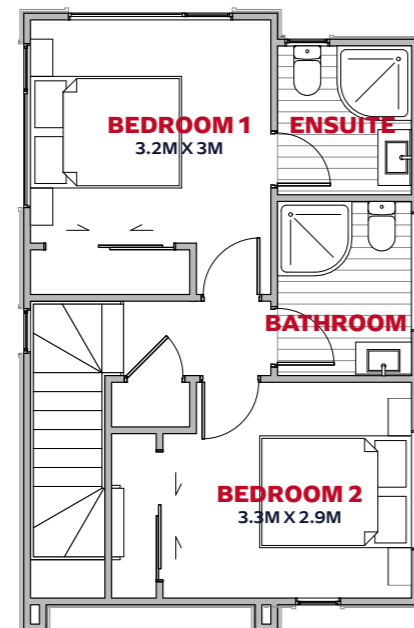
GROUND FLOOR



LEVEL ONE



GROUND FLOOR



LEVEL ONE



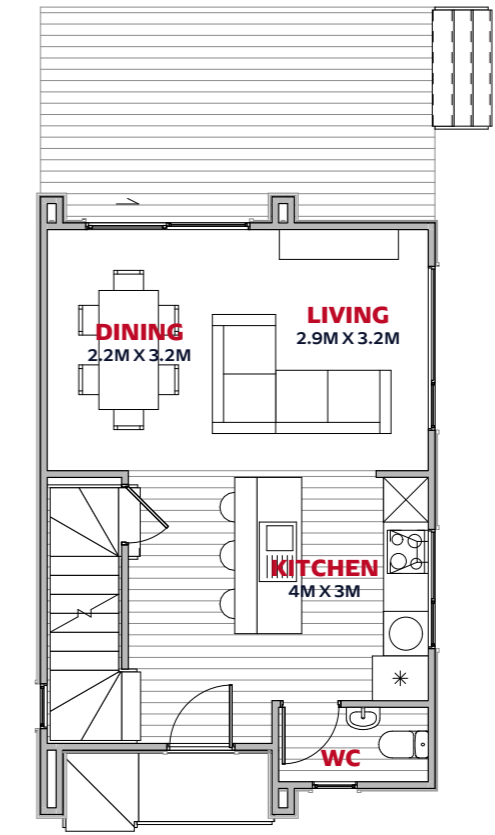
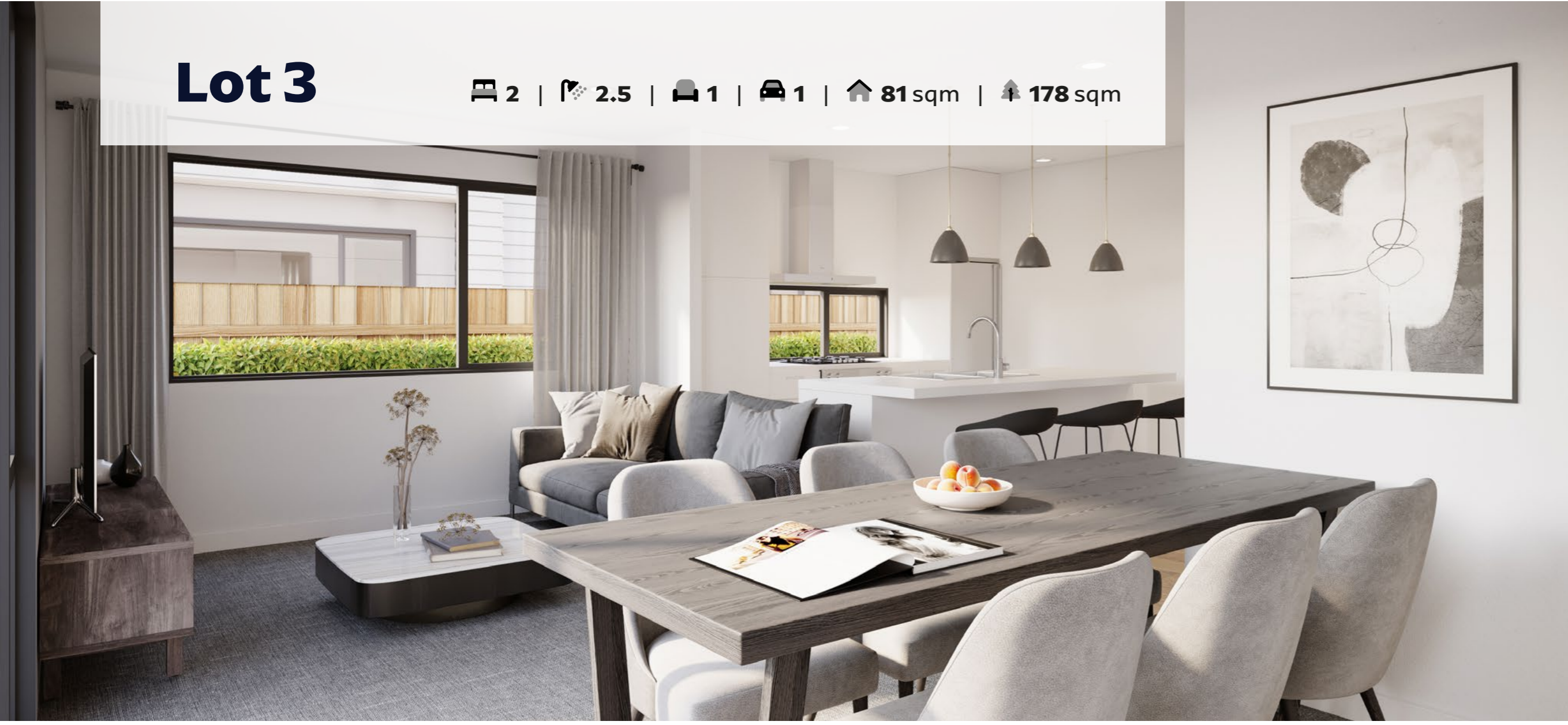
Lot 2

2 |
 2.5 |
 1 |
 1 |
 81 sqm |
 199 sqm

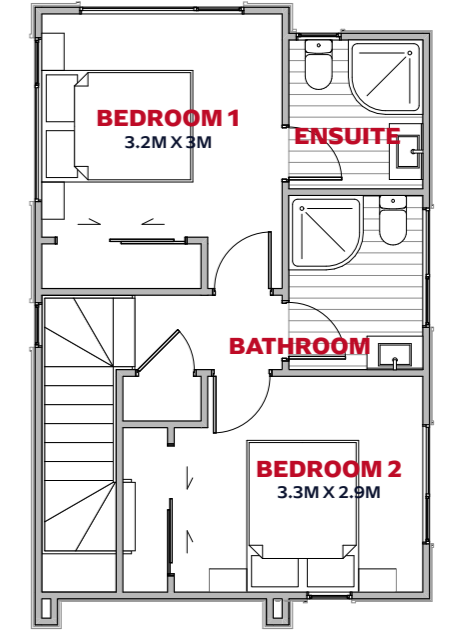


Lot 3

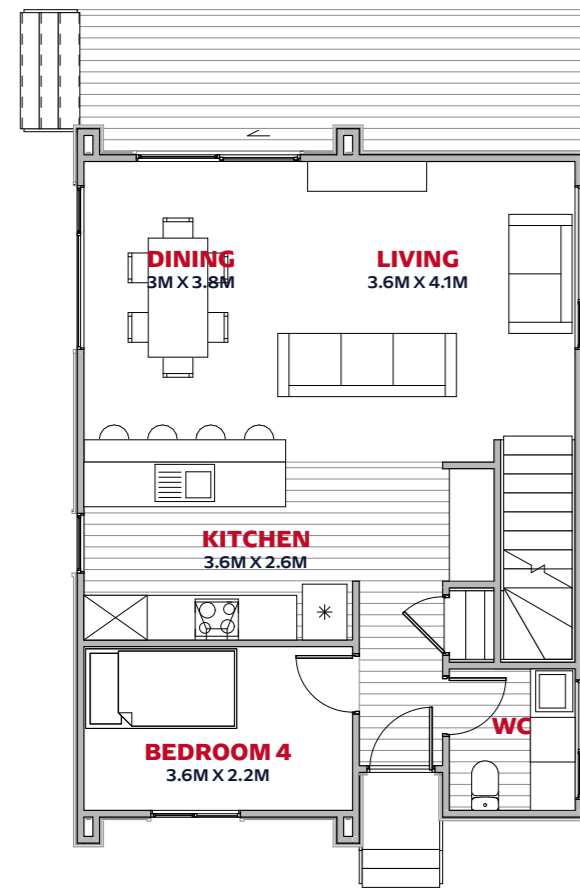
🏠 2 | 🌳 2.5 | 🚗 1 | 🚗 1 | 🏠 81 sqm | 🌳 178 sqm



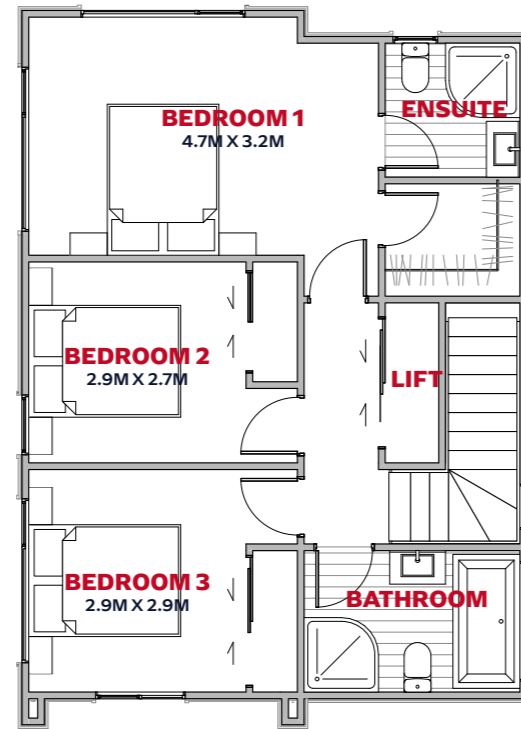
GROUND FLOOR



LEVEL ONE



GROUND FLOOR



LEVEL ONE



Lot 4

4 |
 2.5 |
 1 |
 1 |
 122 sqm |
 181 sqm