

**Lot 8**



**Helvetia Estate**

**2E HELVETIA GROVE, NAENAE**



# Lot 8





# Lot 8



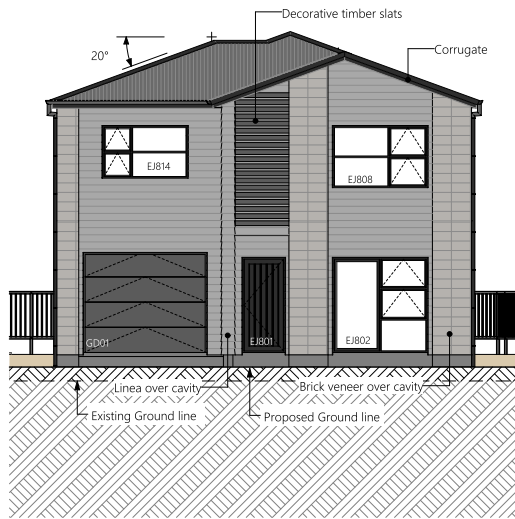


# Lot 8

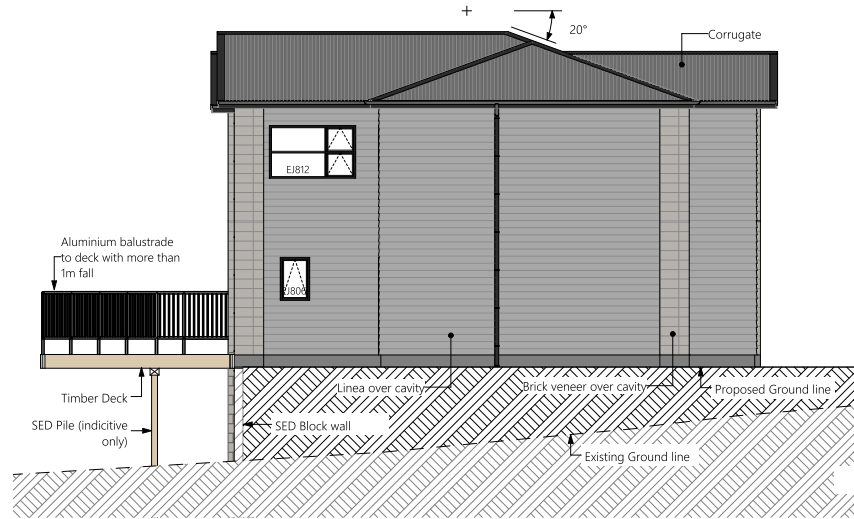


◆ 2 ◆

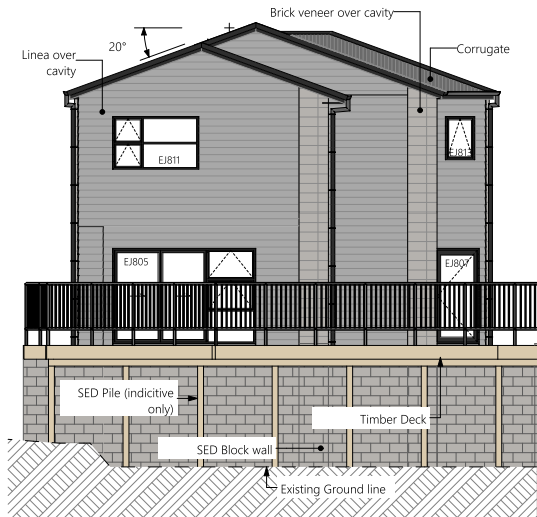
# Lot 8



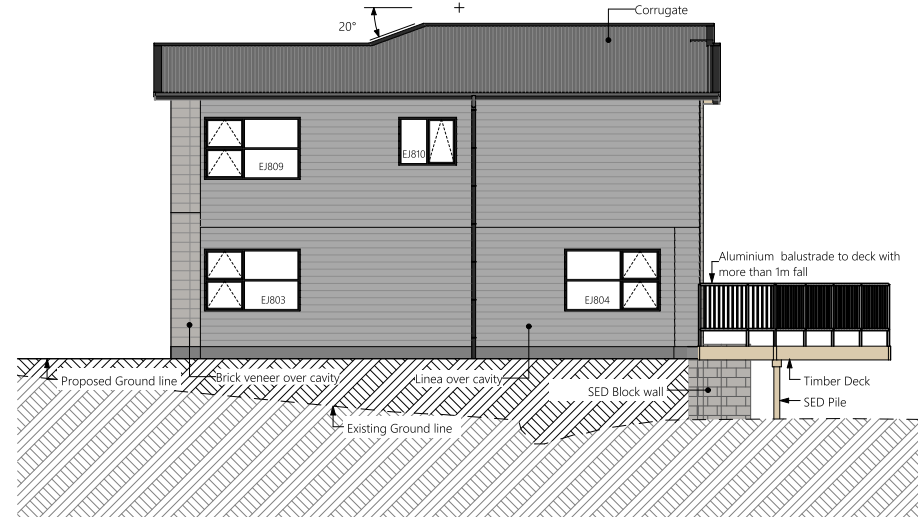
1 East Elevation



2 South Elevation



3 West Elevation

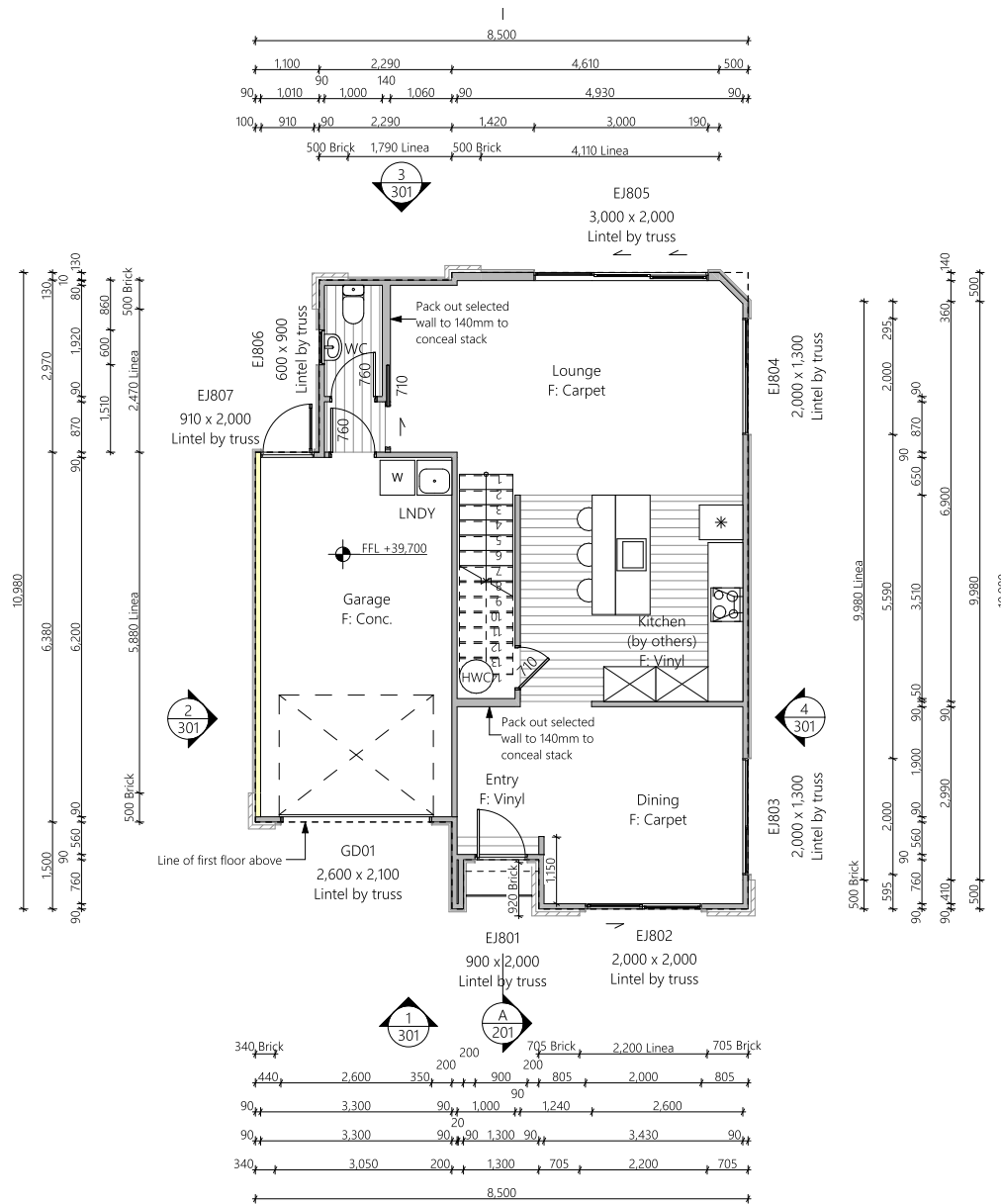


4 North Elevation



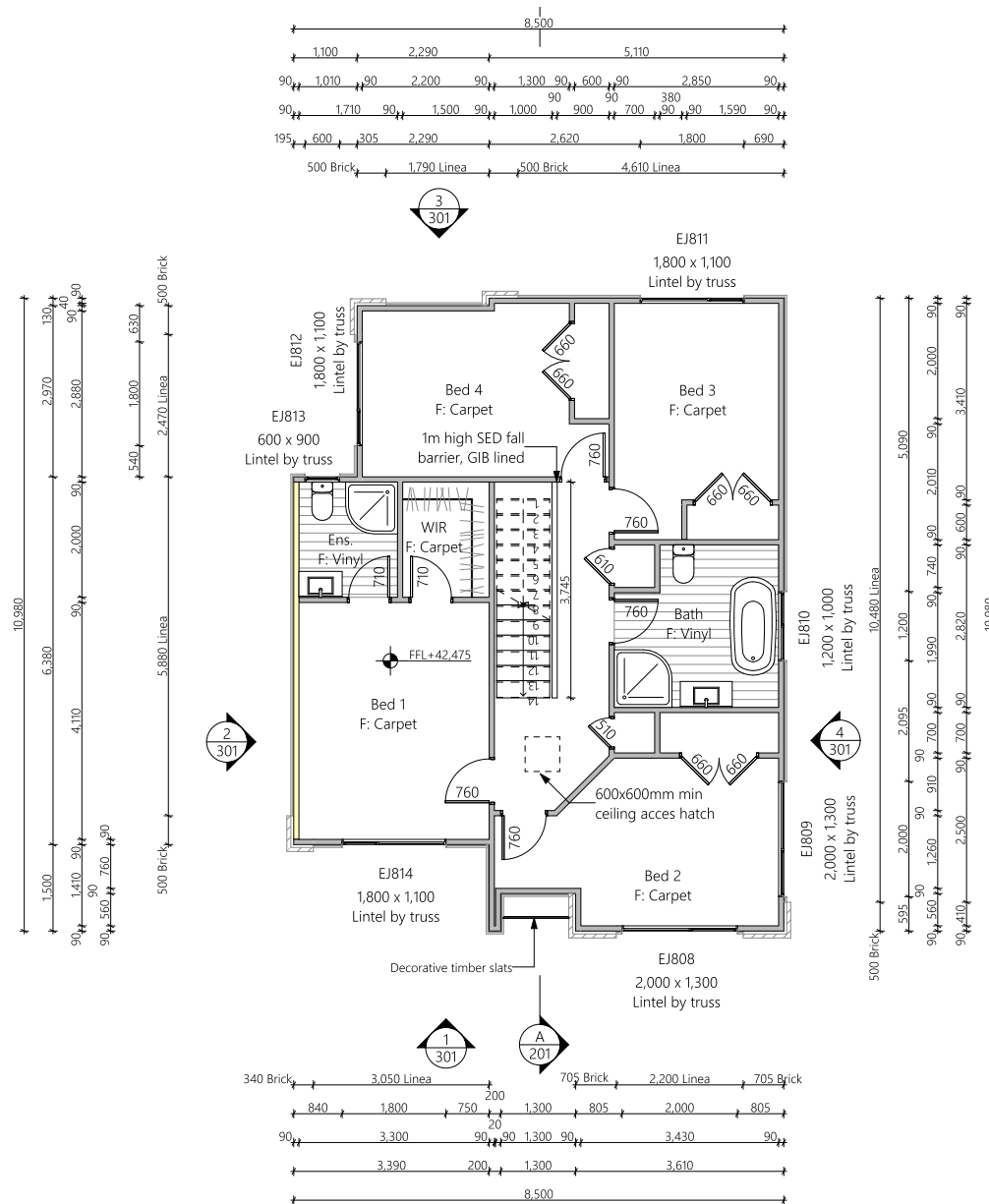
# Lot 8

Lower Floor Area: 83.3 sqm  
Total Floor Area: 167 sqm

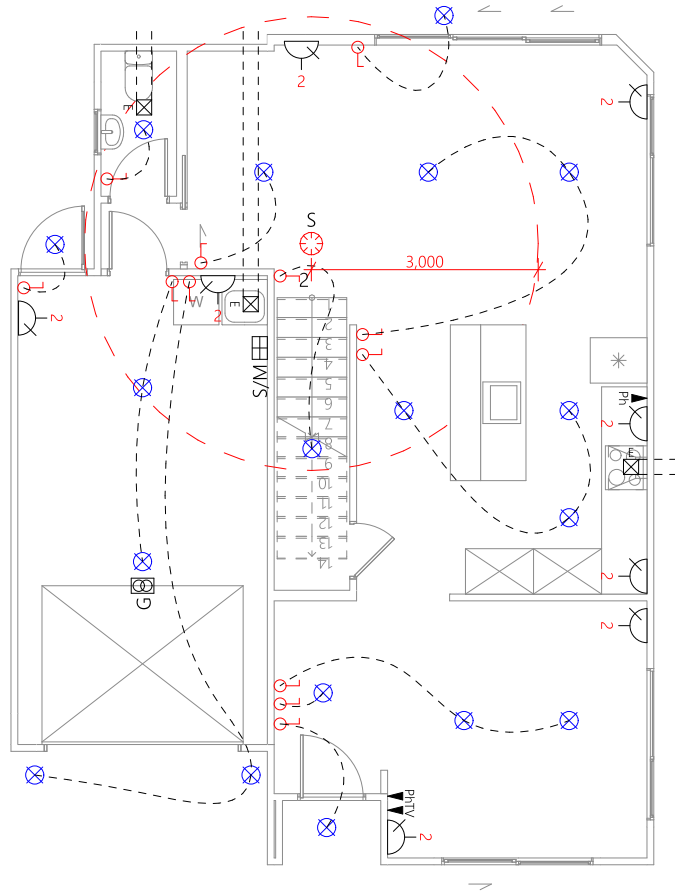


# Lot 8

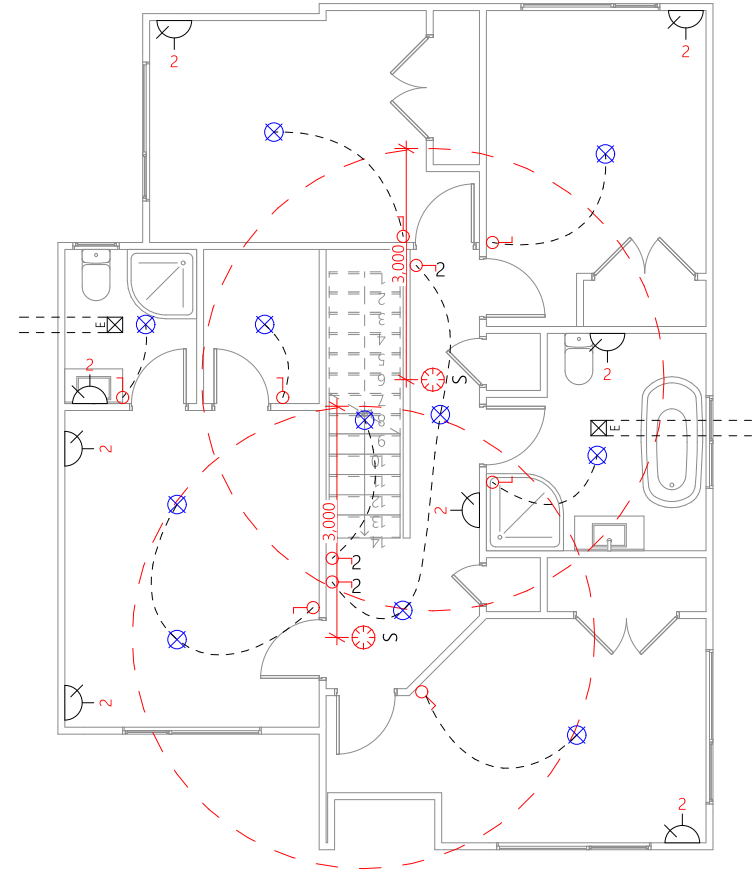
Upper Floor Area: 83.7 sqm  
Total Floor Area: 167 sqm



# Lot 8



Lower Electrical Plan

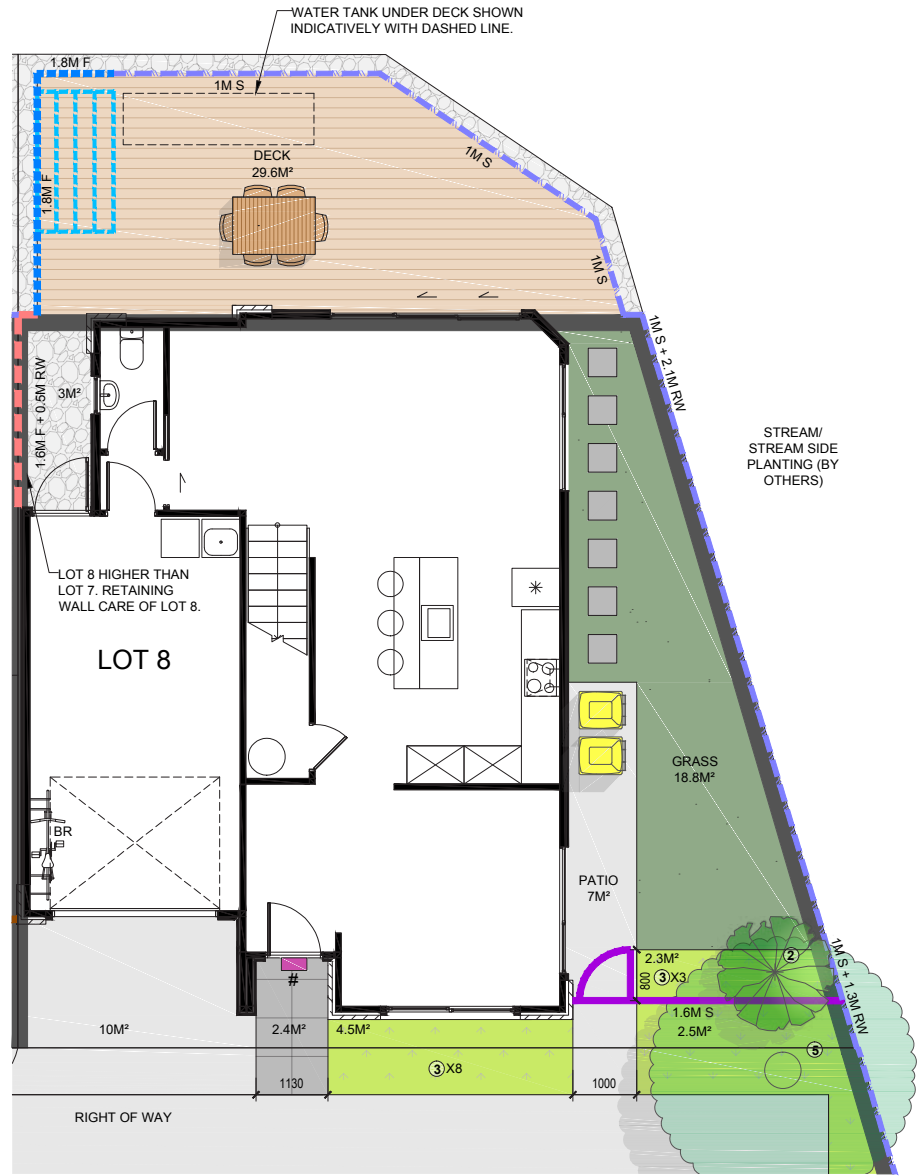


Upper Electrical Plan

	Garage door motor		Television outlet		Recessed downlight
	Smoke detector		Light switch		Power point
	Extractor fan		Two way light switch		Smart Meter
	Phone outlet				



# Lot 8



# Lot 8

	Product	Colour/Finish
<b>EXTERIOR LOT 8</b>		
Roof	Colorsteel Corrugated (as shown on plan)	Grey Friars
Fascia/Barge Boards	Colorsteel	Titania
Spouting	Colorsteel	Grey Friars
Downpipes	Marley PVC Colour (retention tank)	Grey Friars
Retention Tank (if required)	Thintanks NZ	Surf Mist
Soffits	Painted	Wattyl Enclose Half
Cladding 1	Linea weatherboard — painted	Wattyl Grit Grey
Cladding 2	Brick cladding (Midland Brick) Ezymix mortar – Antique White	Range: Euro Grande Colour: Blanco
Concrete Letterbox	Painted	Wattyl Dundee
Garage Doors	Dominator Montana smooth	Grey Friars
Garage Door Reveals	Timber Painted	Colorsteel Titania (paint match)
Aluminium Joinery (with clear glass)	Powdercoated	Matt Titania
Aluminium Balustrading	Powdercoated	Matt Flaxpod
(Residential Hardware to all aluminium joinery is colour matched to joinery)		
Front Doors	Vertical Groove	Grey Friars
Front Door Handle	Residential Lever Hardware	Powdercoat finish matched to door



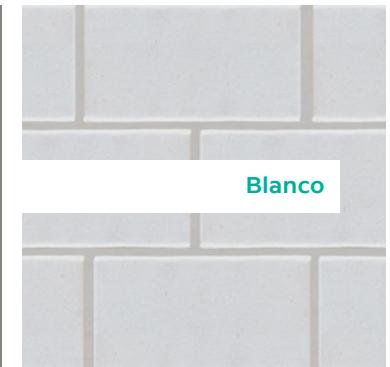
Roof



Aluminium Joinery



Cladding 1



Cladding 2

*All colour swatches are indicative only*