

**Lot 10**



# **Helvetia Estate**

**2E HELVETIA GROVE, NAENAE**

# Lot 10



# Lot 10

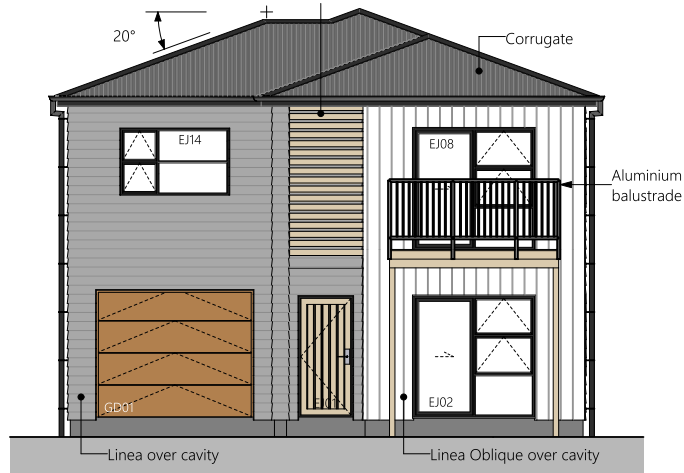


# Lot 10

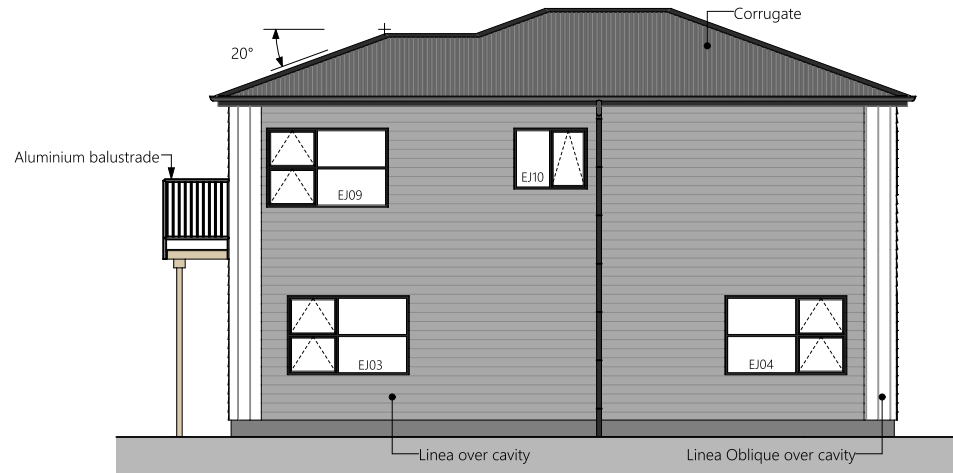


◆ 2 ◆

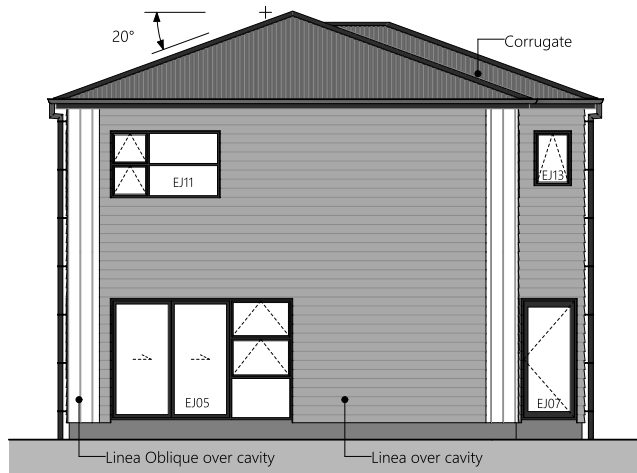
# Lot 10



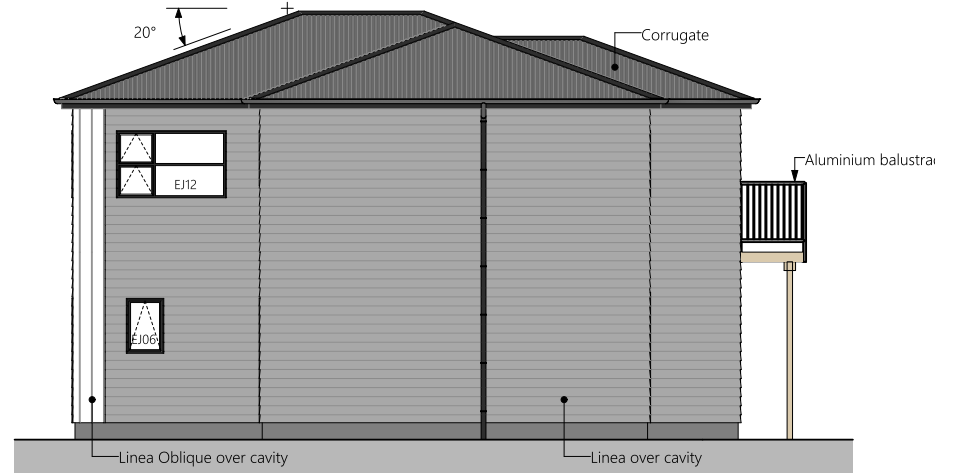
1 West Elevation



3 South Elevation

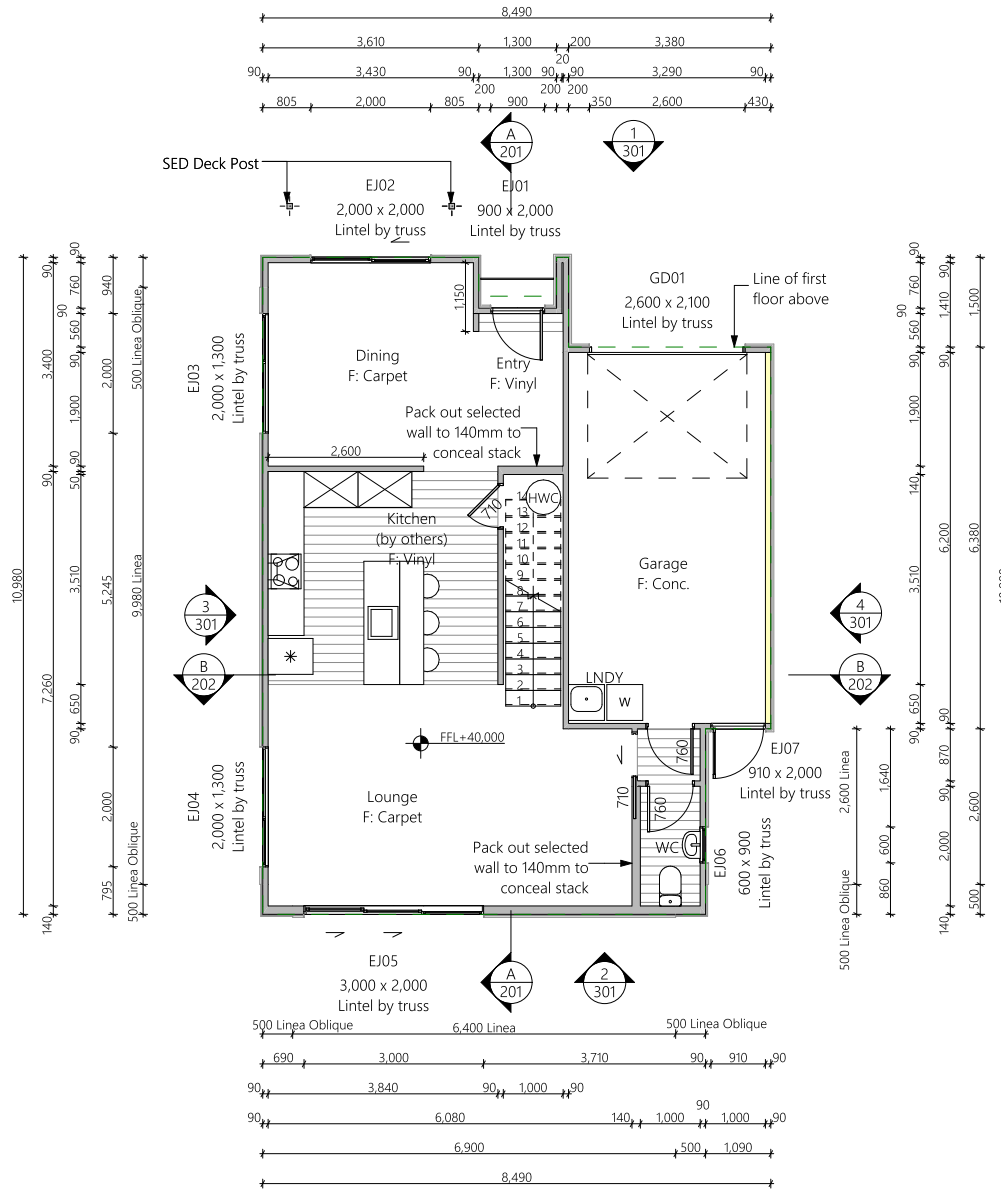


2 East Elevation



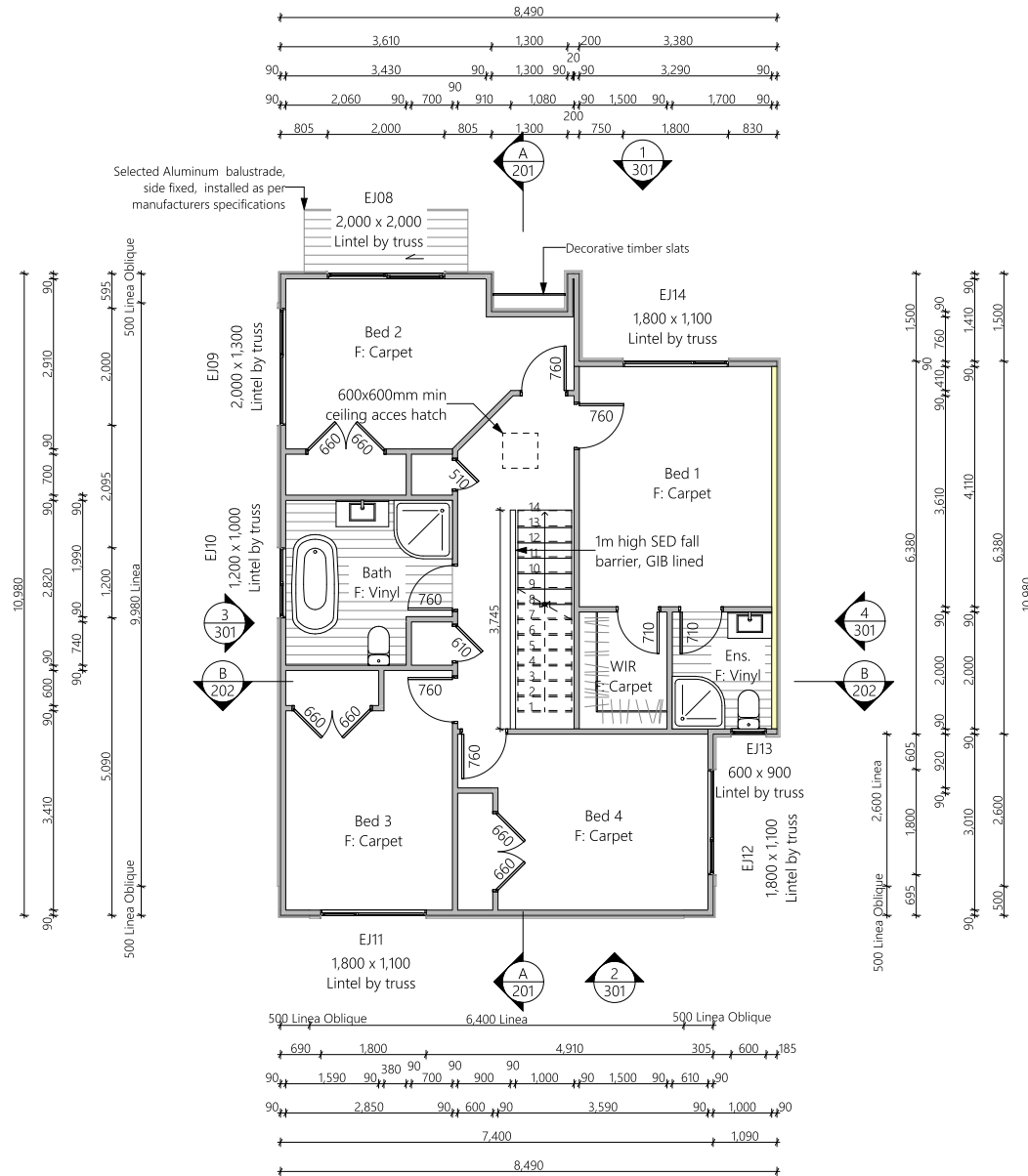
4 North Elevation

# Lot 10



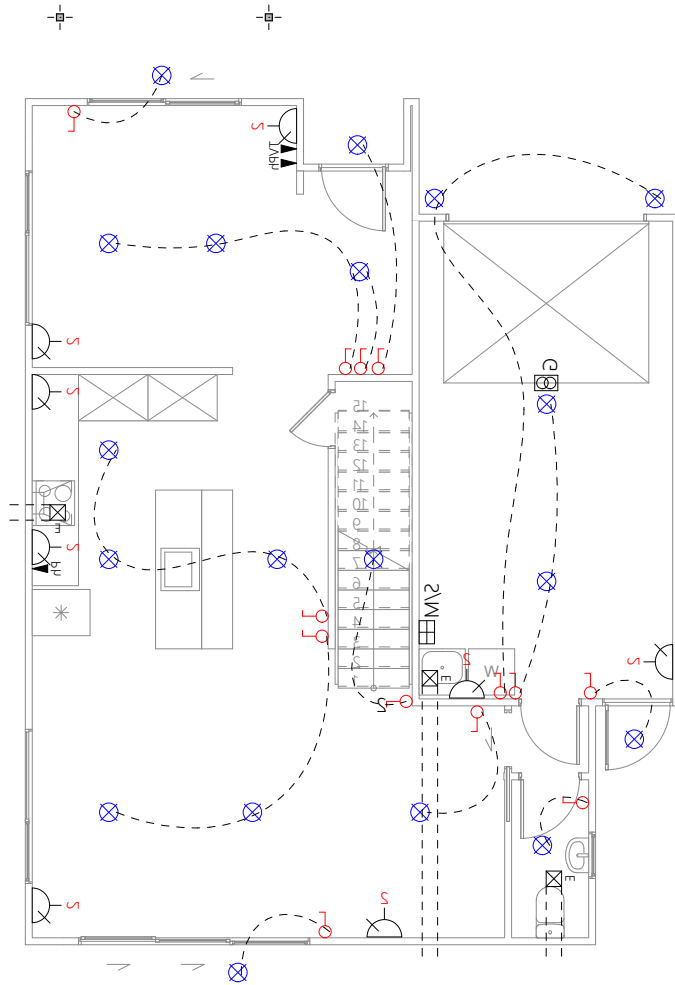
Lower Floor Area: 83.7 sqm  
Total Floor Area: 167.6 sqm

# Lot 10

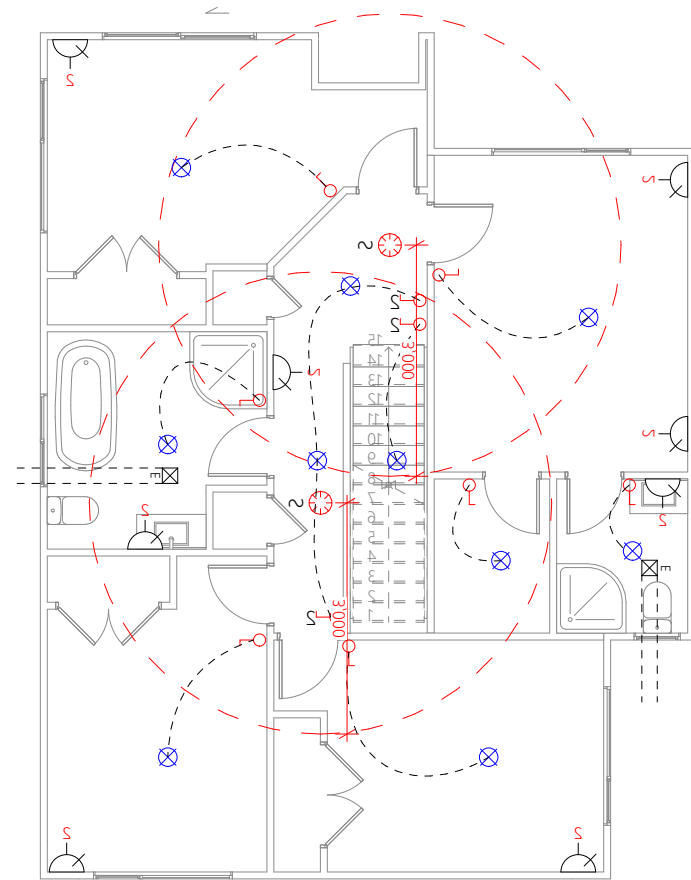


Upper Floor Area: 83.9 sqm  
 Total Floor Area: 167.6 sqm

# Lot 10



Lower Electrical Plan

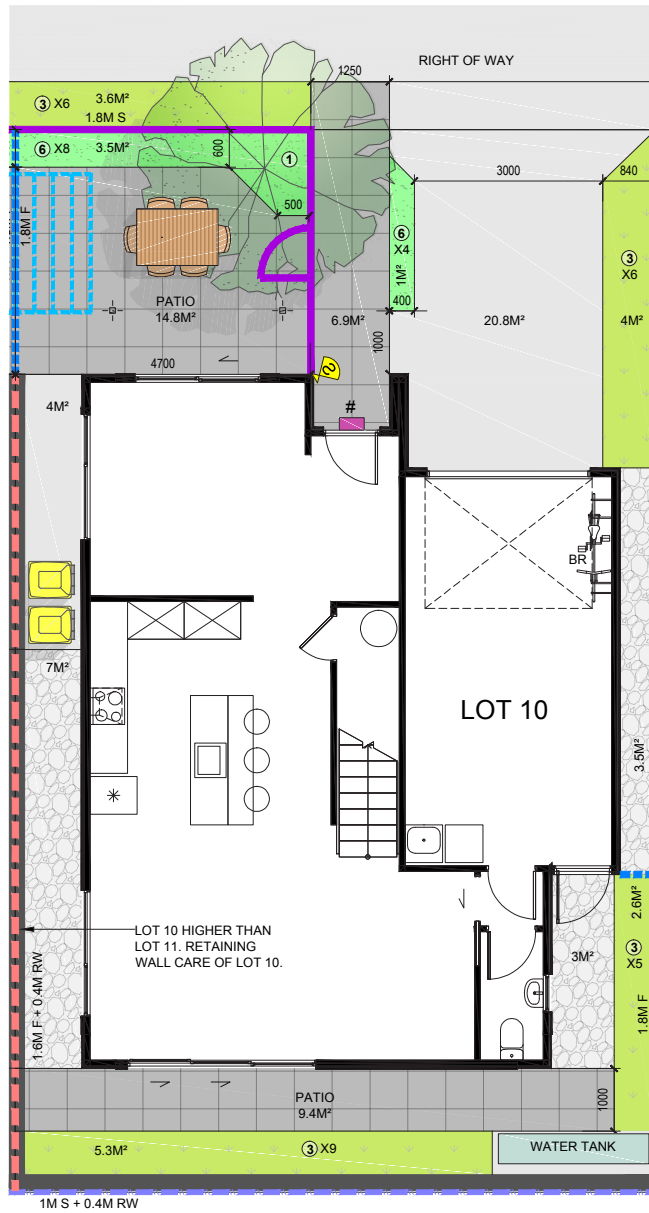


Upper Electrical Plan

	Light switch		Smart Meter		Extractor fan
	Two way light switch		Garage door motor		Phone outlet
	Recessed downlight		Smoke detector		Television outlet
	Power point				



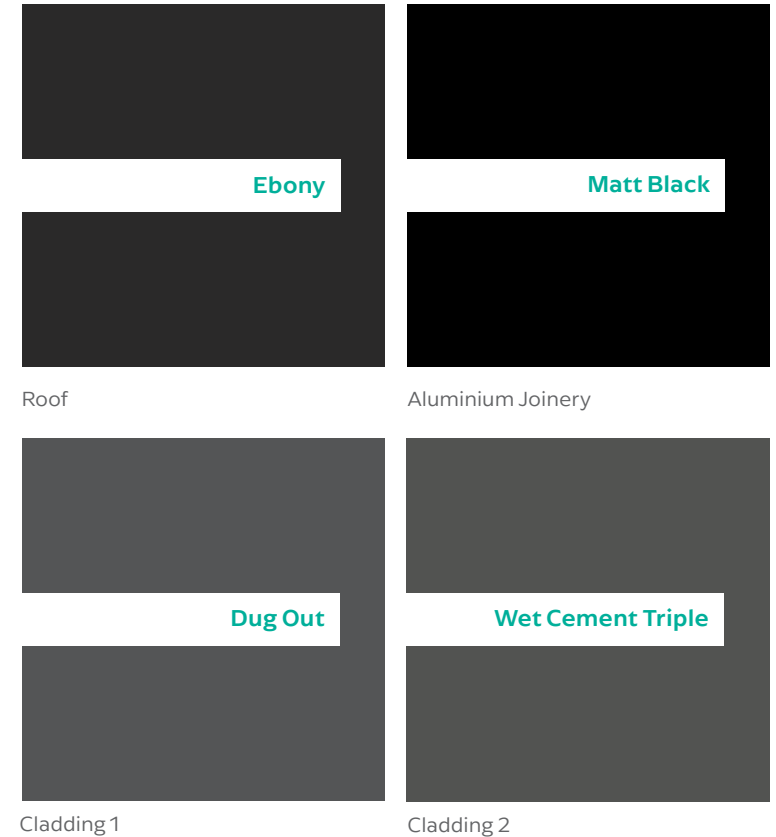
# Lot 10



# Lot 10

	Product	Colour/Finish
<b>EXTERIOR LOT 10</b>		
Roof	Colorsteel Corrugated (as shown on plan)	Ebony
Fascia/Barge Boards	Colorsteel	Ebony
Spouting	Colorsteel	Ebony
Downpipes	Marley PVC Colour (retention tank)	Black
Retention Tank (if required)	Thintanks NZ	Colour: Monument
Soffits	Painted	Wattyl Enclose Half
Cladding 1	Linea weatherboard — painted	Wattyl Dug Out
Cladding 2	Linea Oblique (vertical) cladding painted	Wattyl Wet Cement Triple
Concrete Letterbox	Painted	Wattyl Dug Out
Garage Doors	Dominator Valero smooth	Ebony
Garage Door Reveal	Timber Painted	Wattyl Wet Cement
Aluminium Joinery (with clear glass)	Powdercoated	Matt Black
Aluminium Balustrading	Powdercoated	Matt Black
(Residential Hardware to all aluminium joinery is colour matched to joinery)		
Front Doors	Vertical Groove	Black
Front Door Handle	Residential Lever Hardware	Powdercoat finish matched to door

Note: Decking and supporting timber posts and beams are left natural



All colour swatches are indicative only