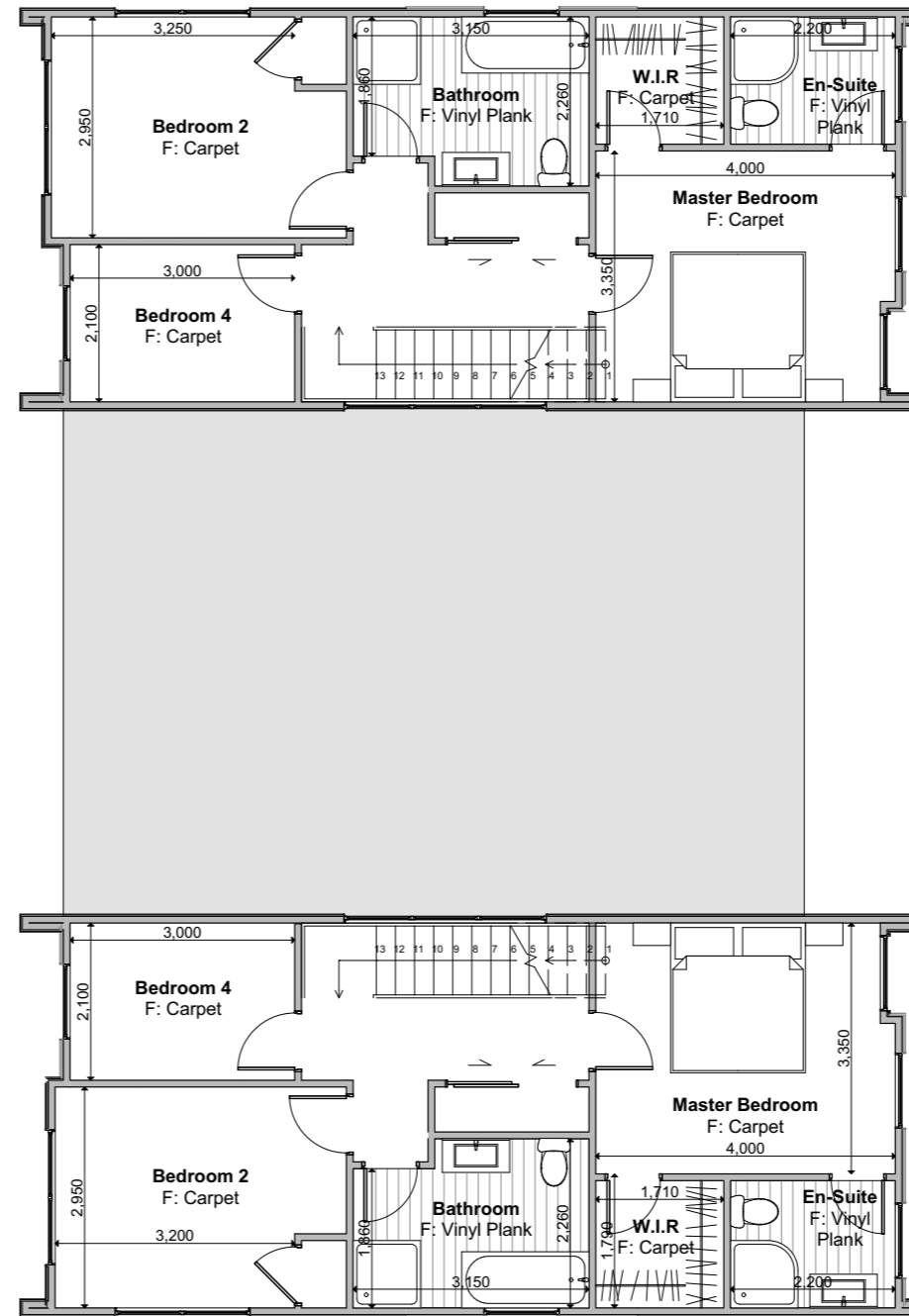


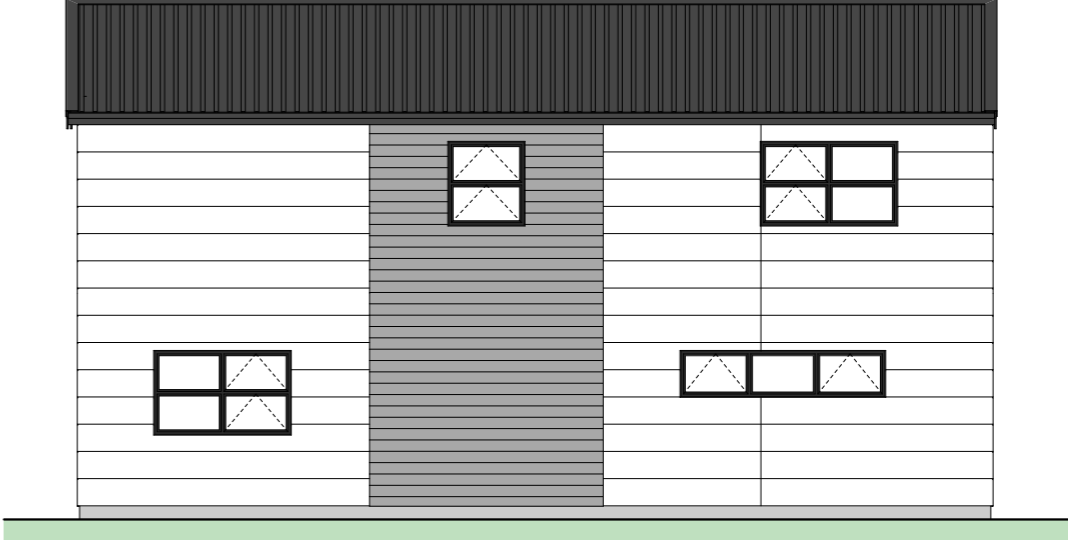
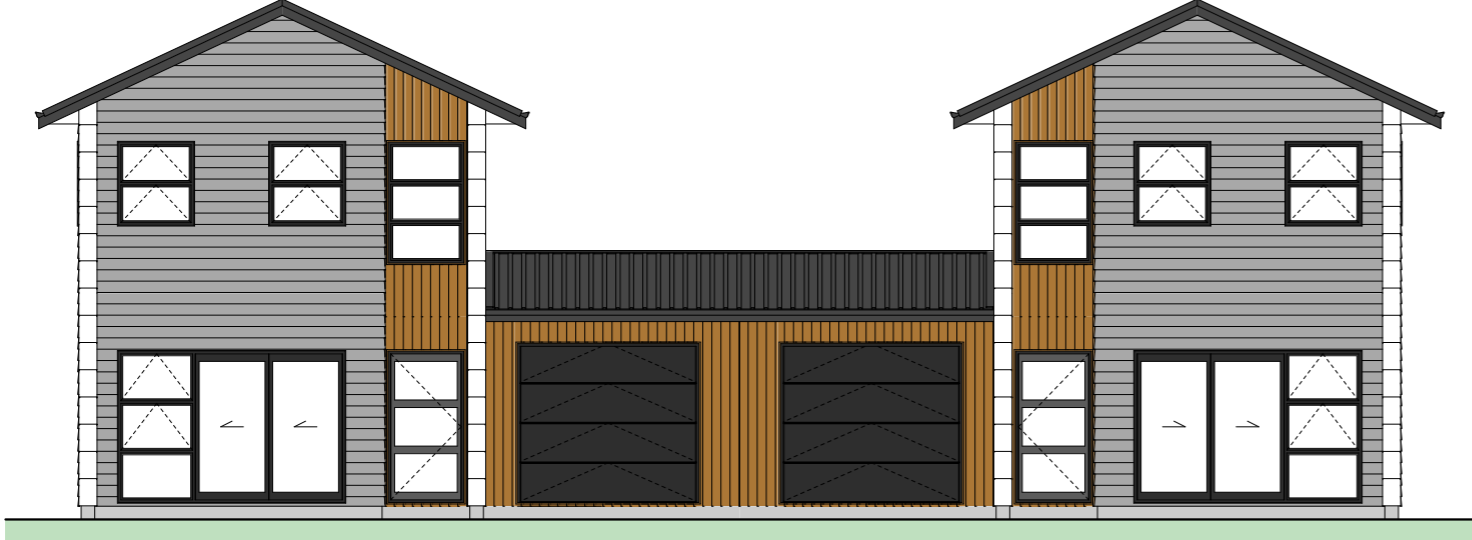
Lower Floor Plan

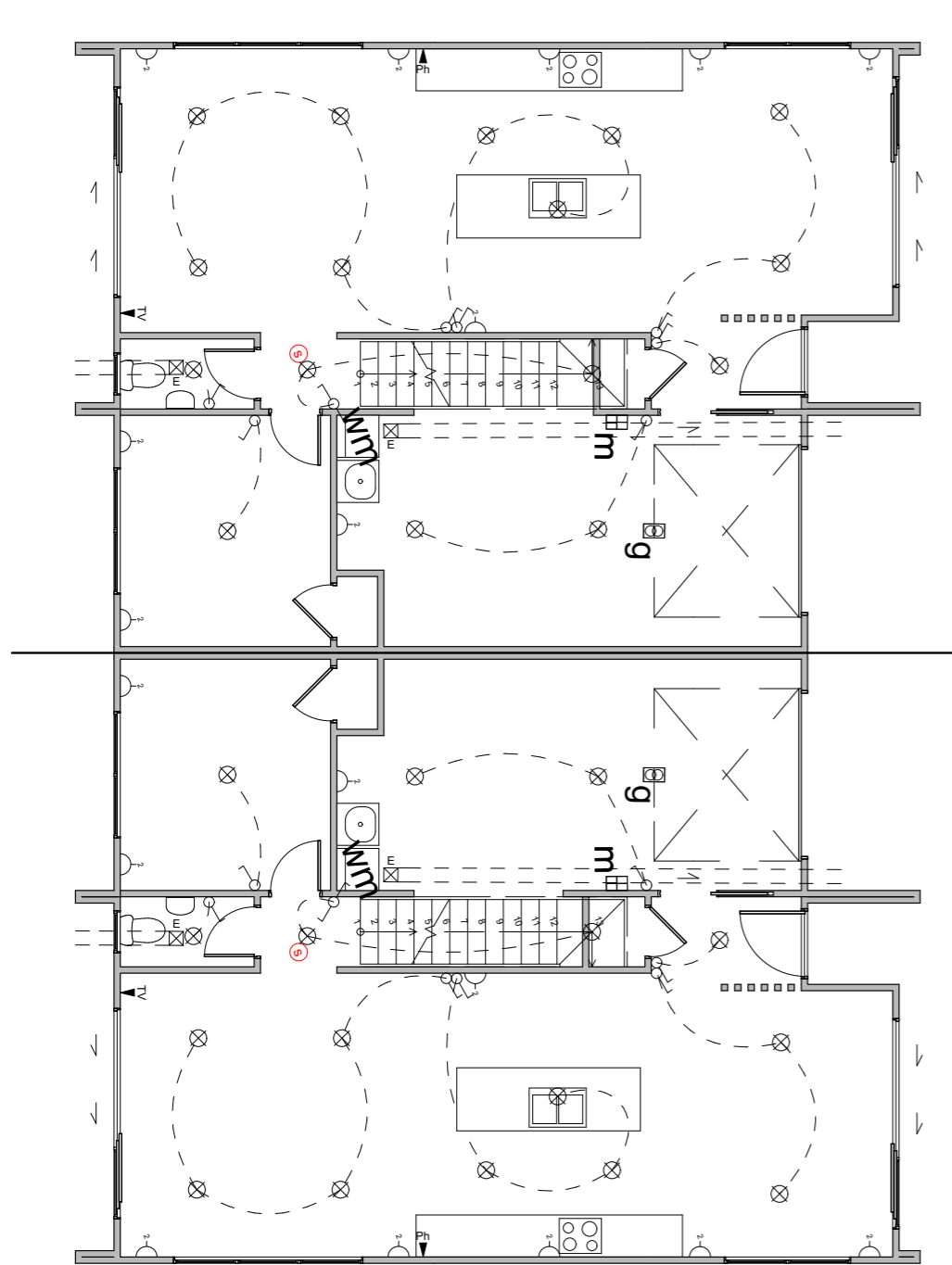


Upper Floor Plan

RAKAIA DESIGN

- Floor Area = 152m² (Per unit)**
- Cladding 1 = Linea Weatherboards on cavity
 - Cladding 2 = Cedar Shiplap on cavity
 - Cladding 3 = Horizontal Stria on cavity
 - Roofing = Corrugated Colorsteel



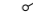
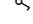
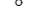


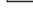
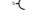
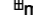
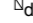
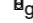






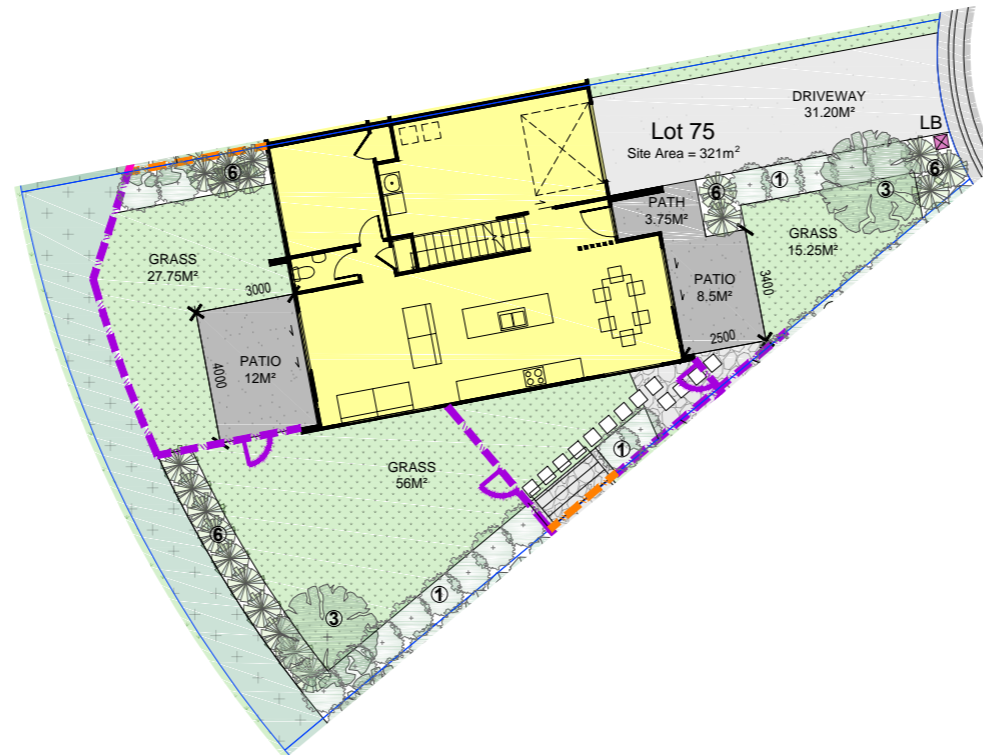
Lower Floor Plan



Upper Floor Plan

Electrical Legend

-  Light switch
-  Two way light switch
-  Feature light
-  External wall light
-  Recessed downlight
-  Fluorecent light
-  Power point
-  Meter box
-  Distribution board
-  Garage door motor
-  Smoke detector
-  Extractor fan
-  Phone outlet
-  Television outlet



SUBTROPICAL

TYPE 1 PLANT SELECTION OPTIONS:

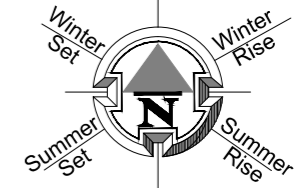
| KEY | DESCRIPTION | AKE AKE | GRISELINIA | PITOSPORUM |
|-----|---|---------|------------|------------|
| ① | PLANT ATTRIBUTES: - EVERGREEN - HEDGING SELECTION | | | |

TYPE 3 PLANT SELECTION OPTIONS:

| KEY | DESCRIPTION | HOHERIA | KOWHAI | TITOKI |
|-----|--|---------|--------|--------|
| ③ | PLANT ATTRIBUTES: - NZ NATIVE - FEATURE TREE | | | |

TYPE 6 PLANT SELECTION OPTIONS:

| KEY | DESCRIPTION | APODASMA SIMILIS OIOI | ANEMANTHELE LESSONIANA 'WIND GRASS' | ARTHROPODIUM CIRRRATUM 'RENGA RENGA' | ASTILIA BANKSII | CANNA LILIES | CHOISYA TERNATA 'MEXICAN ORANGE BLOSSOM' |
|-----|--|-----------------------|-------------------------------------|--------------------------------------|-----------------------|-----------------------|--|
| ⑥ | PLANT ATTRIBUTES: - EVERGREEN - SHRUBS | | | | | | |
| | COROKIA CULTIVARS | FLAX CULTIVARS | CABBAGE TREE | LAVENDER | MUEHLENBECKIA ASTONII | PSEUDOPANAX CULTIVARS | UGNI MOLINAE 'NZ CRANBERRY' |
| | | | | | | | |



LEGEND

| | |
|--|---|
| | GRASS. HYDROSEED WITH 100MM TOPSOIL. |
| | BRUSHED FINISH CONCRETE. |
| | CONCRETE: EXPOSED AGGREGATE FINISH OR COLOURED FINISH OR SAWCUTS AT 0.6M CTRS |
| | STONES (PERMEABLE) |
| | STONES (PERMEABLE) WITH FLAGSTONE STEPPING STONES |
| | INDICATIVE BATTER BANK. REFER SURVEY DOCUMENTS FOR DETAILS. |
| | SERVICE AREA FOR BINS. |
| | LETTERBOX |
| | WASHING LINE |
| | 1.8M HIGH ROUGH SAWN CLOSED BOARDED TIMBER FENCE. |
| | 1.8M HIGH OPEN SLAT TIMBER SCREEN. |
| | 1.5M HIGH HORIZONTAL OPEN SLAT TIMBER FENCE. |
| | 1.2M HIGH HORIZONTAL OPEN SLAT TIMBER FENCE. |
| | INDICATIVE RETAINING WALL (REFER ENGINEERS DOCUMENTATION). |

PRINT IN COLOUR

SCALE 1:200 @ A3

COPYRIGHT © HOUSE OF ORANGE DESIGN LTD

LANDSCAPE SCHEDULE OF AREAS:

| | |
|---|--------------------------------|
| SITE AREA: | 321 M ² |
| PERMEABLE AREA: | 175.25 M ² (54.59%) |
| CONCRETE: | 55.50 M ² |
| GARDEN: | 34 M ² |
| LAWN: | 103.20M ² |
| STONES: | 7.60 M ² |
| FENCE RS 1.8M: | 4.8 LIN. M |
| SCREEN 1.8M: | - LIN. M |
| FENCE SLAT 1.5M: | 23 LIN. M |
| FENCE SLAT 1.2M : | - LIN. M |
| VEHICULAR CROSSING: | - M ² |
| -FENCE LENGTH INCLUDES GATE. ALL GATES ARE BLACK POWDERCOATED. | |
| - 100X50 H5 GARDEN EDGING. | |
| - ALL RETAINING WALLS, BATTER BANKS, M ² AREAS, FENCING HEIGHTS AND LENGTHS ARE SUBJECT TO FINAL FINISHED GROUND LEVEL HEIGHT AND EARTHWORKS PLAN AND ARE SUBJECT TO CHANGE. | |

| Placement | Colour | Sample/notes |
|---------------------------------|--------------------------------|-----------------------|
| Roof | Titania | Corrugated Colorsteel |
| Fascia | Titania | |
| Gutters | Titania | |
| Downpipes | Titania | |
| Soffits | Wattyl Graceful White | |
| Joinery | Titania | |
| Cladding 1 - Linea Weatherboard | Wattyl Bushland | |
| Cladding 2 - Cedar Shiplap | Forestwood Stain Rustic Oak | |
| Cladding 3 - Horizontal Stria | Wattyl Rock Oyster | |
| Box corners | N/A | |
| Window surrounds | N/A | |
| Garage door - colour Profile | Titania | Futura Woodgrain |
| Garage revels | Wattyl Graceful White | |
| Front door - colour Profile | Ironsand | LAT00 |
| Notes | | |