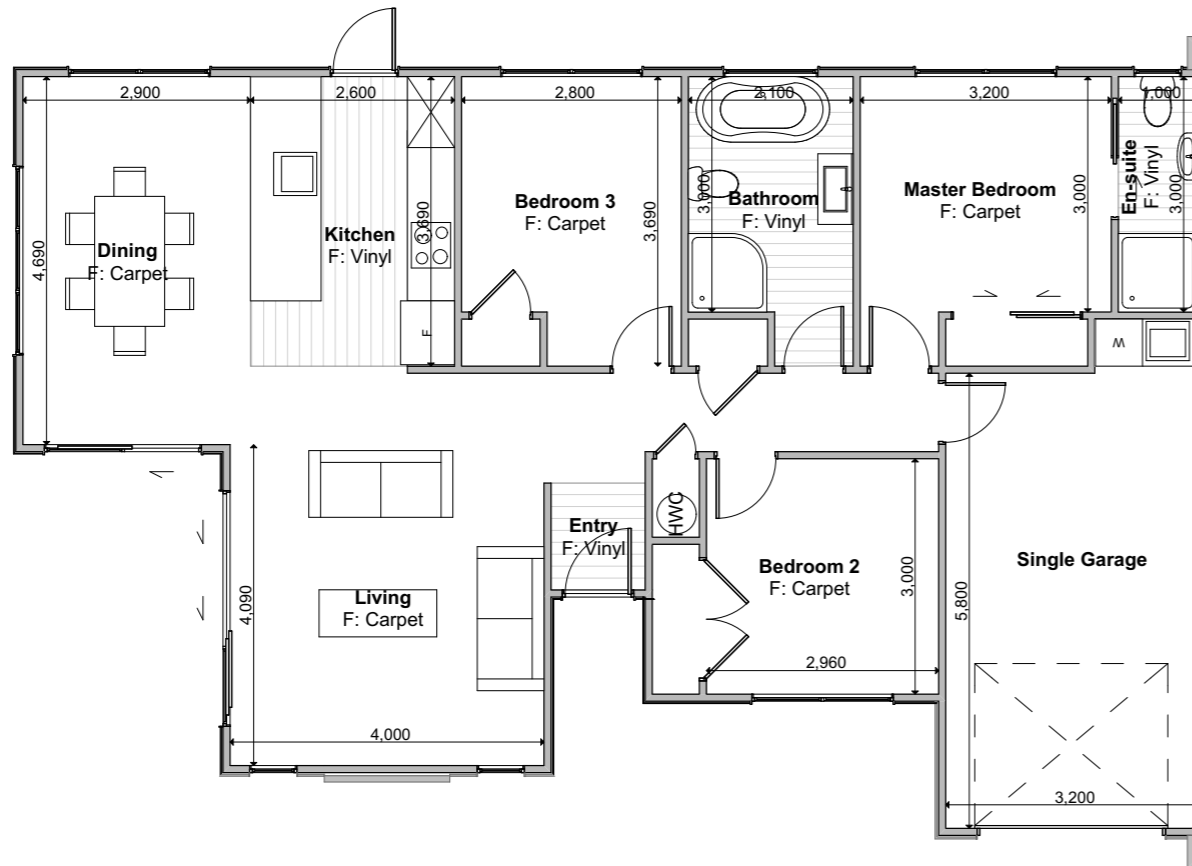


MANAPOURI GROVE
• KELSON •

LOT: 88
Hokitika

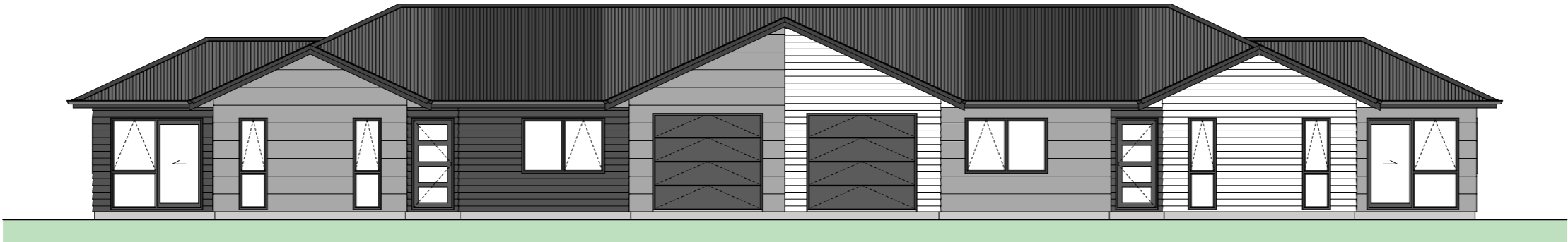


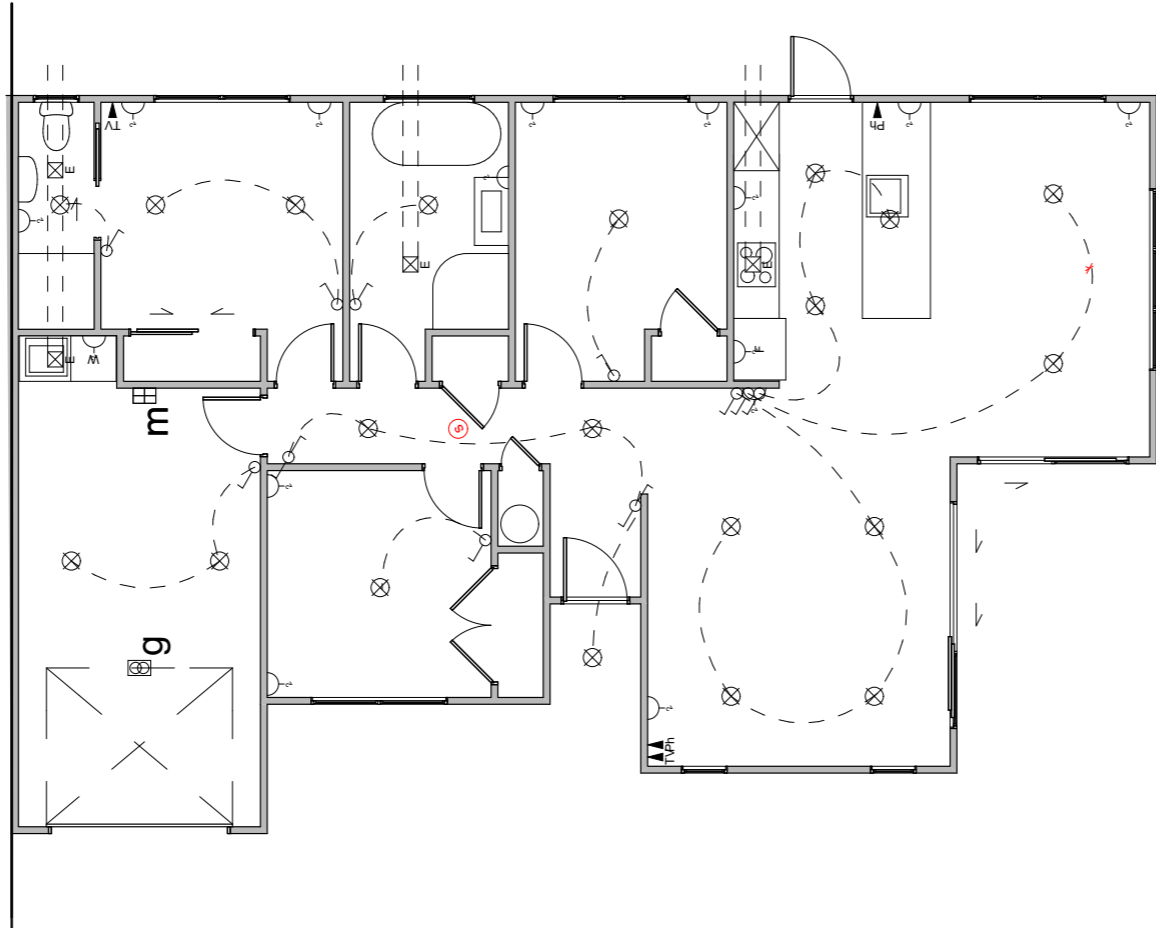





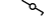
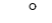

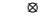
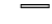
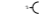
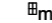
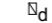





Floor Area = 122m² (Per unit)

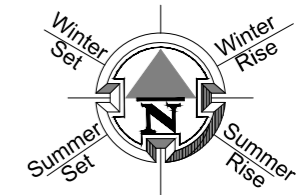
- Cladding = Linea Weatherboards on cavity
- Cladding 2 = Stria on cavity
- Cladding 2 = Schist on cavity
- Roofing = Pressed Metal Tile





Electrical Legend

-  Light switch
-  Two way light switch
-  Feature light
-  External wall light
-  Recessed downlight
-  Fluorecent light
-  Power point
-  Meter box
-  Distribution board
-  Garage door motor
-  Smoke detector
-  Extractor fan
-  Phone outlet
-  Television outlet



| LEGEND | |
|--------|---|
| | GRASS. HYDROSEED WITH 100MM TOPSOIL. |
| | BRUSHED FINISH CONCRETE. |
| | CONCRETE: EXPOSED AGGREGATE FINISH OR COLOURED FINISH OR SAWCUTS AT 0.6M CTRS |
| | STONES (PERMEABLE) |
| | STONES (PERMEABLE) WITH FLAGSTONE STEPPING STONES |
| | INDICATIVE BATTER BANK. REFER SURVEY DOCUMENTS FOR DETAILS. |
| | SERVICE AREA FOR BINS. |
| | LB LETTERBOX |
| | WL WASHING LINE |
| | 1.8M HIGH ROUGH SAWN CLOSED BOARDED TIMBER FENCE. |
| | 1.8M HIGH OPEN SLAT TIMBER SCREEN. |
| | 1.5M HIGH HORIZONTAL OPEN SLAT TIMBER FENCE. |
| | 1.2M HIGH HORIZONTAL OPEN SLAT TIMBER FENCE. |
| | INDICATIVE RETAINING WALL (REFER ENGINEERS DOCUMENTATION). |

PRINT IN COLOUR
SCALE 1:200 @ A3
COPYRIGHT © HOUSE OF ORANGE DESIGN LTD

| LANDSCAPE SCHEDULE OF AREAS: | |
|---|----------------------------|
| SITE AREA: | 295 M ² |
| PERMEABLE AREA: | 142 M ² (48 %) |
| CONCRETE: | 31 M ² |
| GARDEN: | 38.50 M ² |
| LAWN: | 88.50 M ² |
| STONES: | 15 M ² |
| FENCE RS 1.8M: | - LIN. M |
| SCREEN 1.8M: | - LIN. M |
| FENCE SLAT 1.5M: | 1 LIN. M |
| FENCE SLAT 1.2M : | 12 LIN. M |
| VEHICULAR CROSSING: | 5.7 M ² |
| -FENCE LENGTH INCLUDES GATE. ALL GATES ARE BLACK POWDERCOATED. | |
| - 100X50 H5 GARDEN EDGING. | |
| - ALL RETAINING WALLS, BATTER BANKS, M ² AREAS, FENCING HEIGHTS AND LENGTHS ARE SUBJECT TO FINAL FINISHED GROUND LEVEL HEIGHT AND EARTHWORKS PLAN AND ARE SUBJECT TO CHANGE. | |

NZ NATIVE

TYPE 1 PLANT SELECTION OPTIONS:

| KEY | DESCRIPTION | AKE AKE | GRISELINIA | PITTOSPORUM |
|-----|---|---------|------------|-------------|
| ① | PLANT ATTRIBUTES: - EVERGREEN - HEDGING SELECTION | | | |

TYPE 3 PLANT SELECTION OPTIONS:

| KEY | DESCRIPTION | HOHERIA | KOWHAI | TITOKI |
|-----|--|---------|--------|--------|
| ③ | PLANT ATTRIBUTES: - NZ NATIVE - FEATURE TREE | | | |

TYPE 5 PLANT SELECTION OPTIONS:

| KEY | DESCRIPTION | APODASMA SIMILIS OIOI | ANEMANTHELE LESSONIANA 'WIND GRASS' | ARTHROPODIUM CIRRATUM 'RENGA RENG' | ASTILIA BANKSII | COROKIA CULTIVARS | FLAX CULTIVARS | HEBE | LAVENDER | MUEHLENBECKIA ASTONII | PSEUDOPANAX CULTIVARS | UGNI MOLINAE 'NZ CRANBERRY' |
|-----|---|-----------------------|-------------------------------------|------------------------------------|-----------------|-------------------|----------------|------|----------|-----------------------|-----------------------|-----------------------------|
| ⑤ | PLANT ATTRIBUTES: - EVERGREEN - SHRUBS (1M) | | | | | | | | | | | |

| Placement | Colour | Sample/notes |
|---------------------------------|----------------------------|--|
| Roof | Gun Powder | Pressed Metal Tile - Shake profile |
| Fascia | Tui Tuft | |
| Gutters | Grey Friars | |
| Downpipes | Grey Friars | |
| Soffits | Wattyl Enclose 1/4 | |
| Joinery | Appliance White | |
| Cladding 1 - Linea Weatherboard | Wattyl Spirit Grey | |
| Cladding 2 - Stria | Wattyl Dawn Rain | |
| Schist | Mountain Shale - Grey Rust | Classic Stone  |
| Box corners | N/A | |
| Window surrounds | N/A | |
| Garage door - colour | Grey Friars | Milano Woodgrain |
| Garage revels | Wattyl enclose 1/4 | |
| Front door - colour | Grey Friars | LAT00 |
| Notes | | |