







Lot: 74

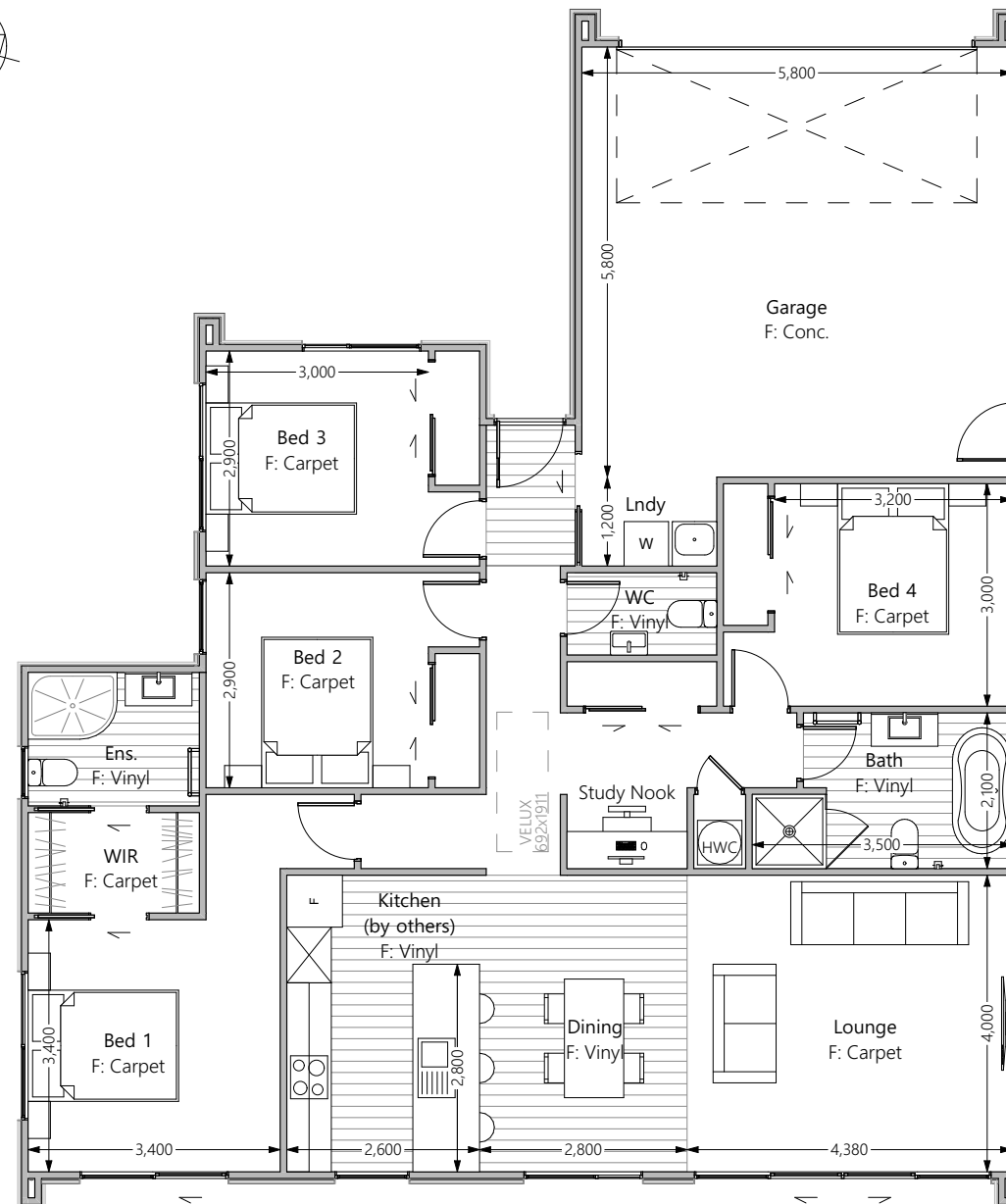
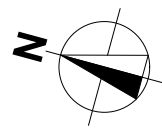
Floor Plan

Floor Area: 165m<sup>2</sup>

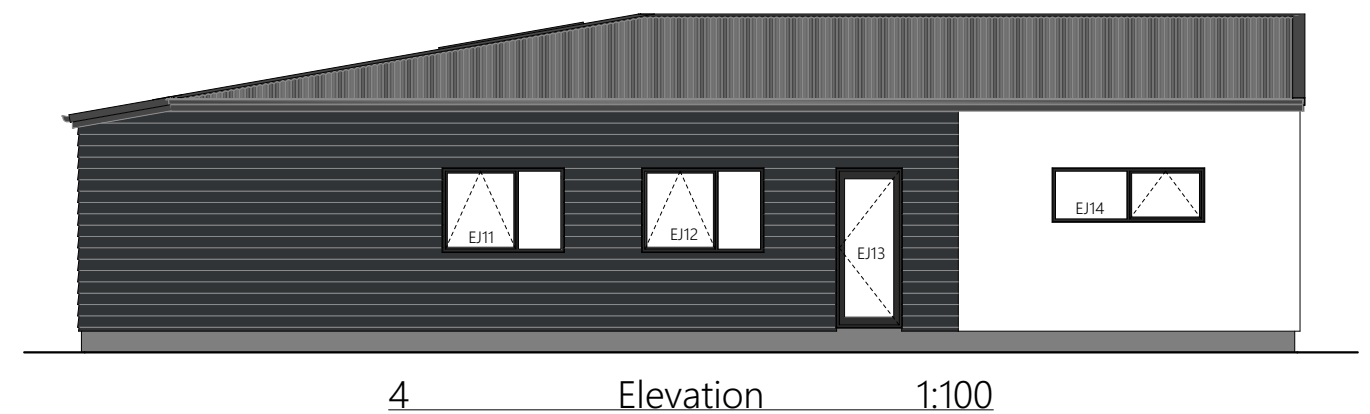
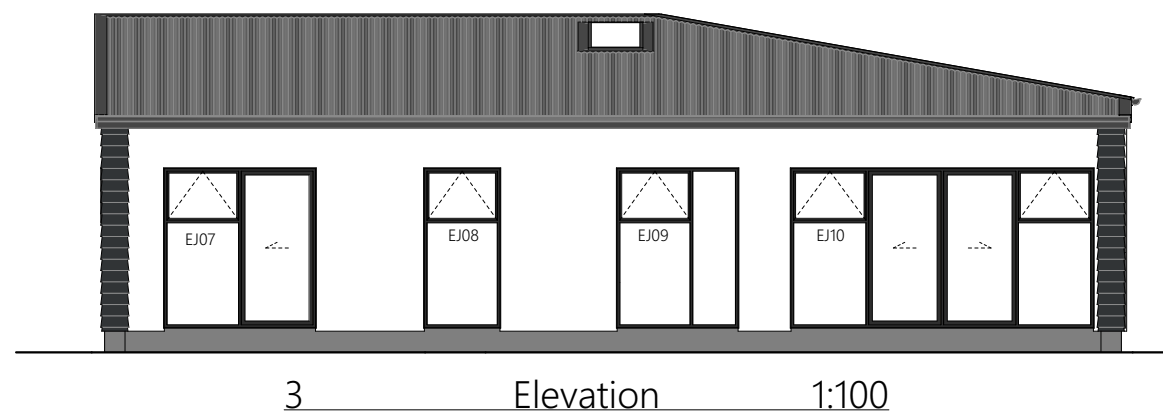
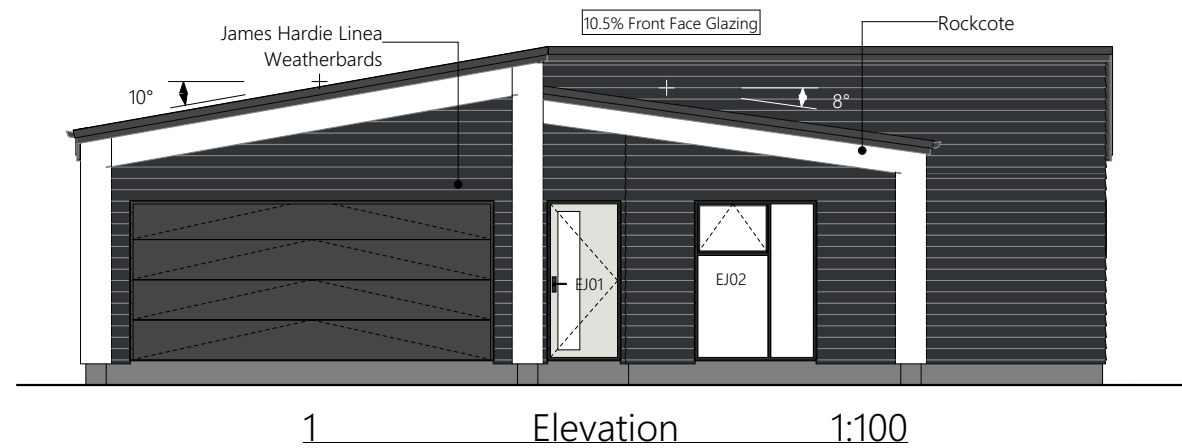
Cladding 1: Rockcote Integra

Cladding 2: JH Linea Weatherboard

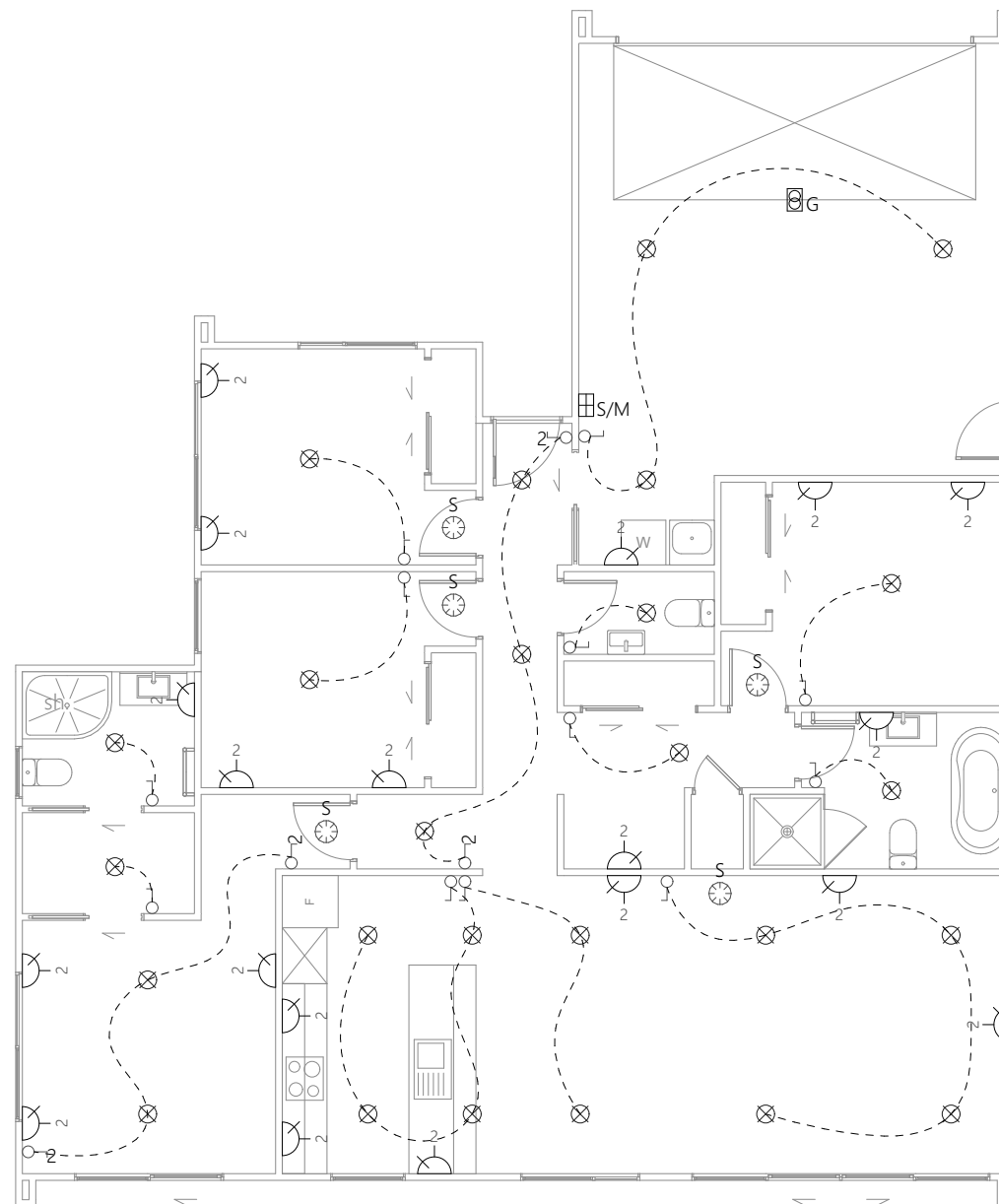
Roofing: Corrugate




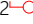

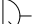



Tommy Laybourn  
Licensed Real Estate Salesperson  
027 379 7385

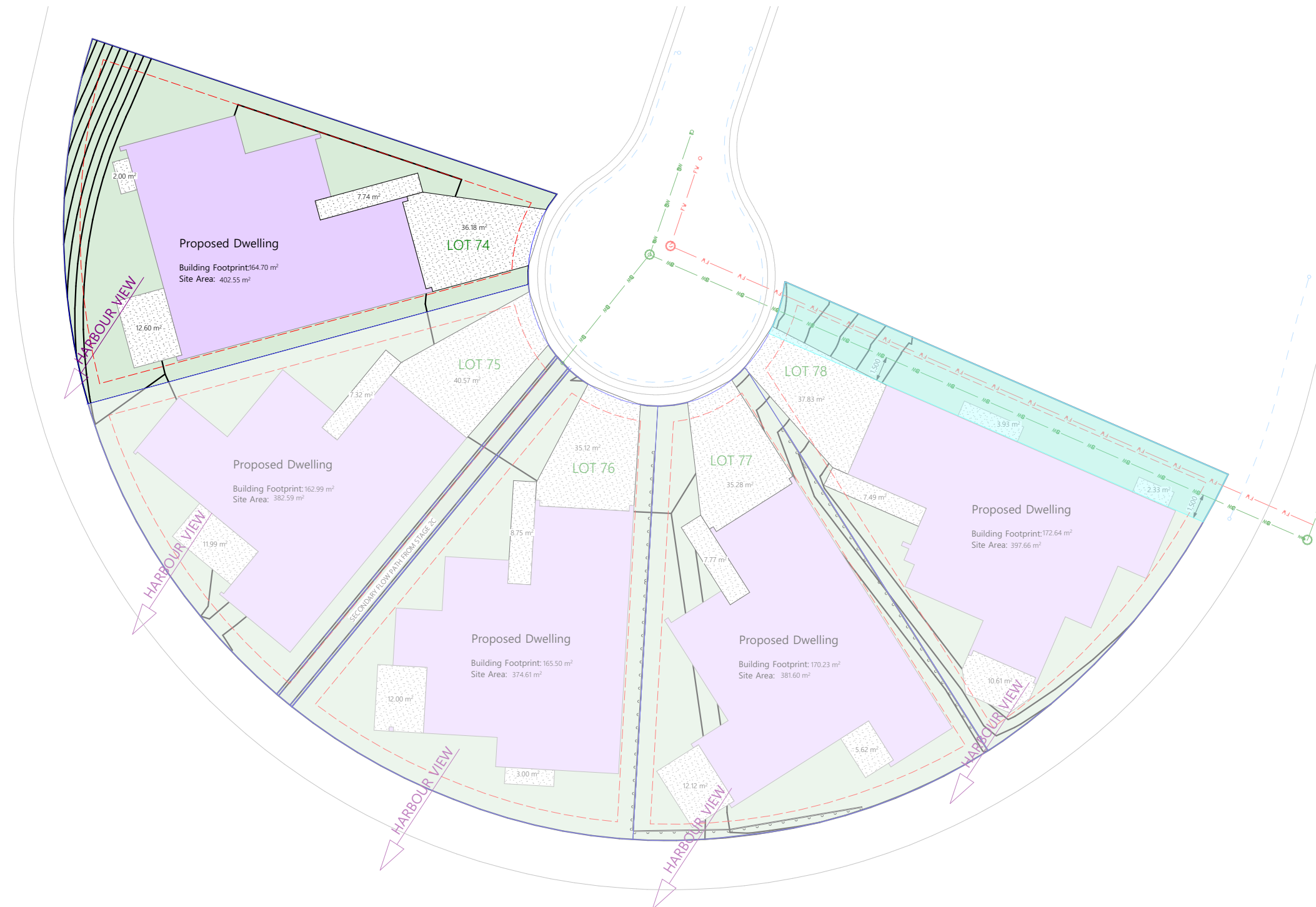






### Electrical Legend

-  Light switch
-  Two way light switch
-  Recessed downlight
-  Power point
-  Smart Meter
-  Garage door motor
-  Smoke detector





LEGEND	
	KARAEHE - GRASS
	RAIMA- CONCRETE. BRUSH FINISH
	EXPOSED AGGREGATE FINISHED CONCRETE
	KŌWHATU- STONES (PERMEABLE)
	INDICATIVE BATTER BANK. REFER DOCUMENTATION BY OTHERS FOR DETAILS.
	PAVERS (SHOWN INDICATIVELY)
	IPUPARA/ HANGARUA - SERVICE AREA FOR RUBBISH/ RECYCLING BINS
	POUAKA RETA- LETTERBOX
	WASHING LINE
	1.8M F 1.8M HIGH ROUGH SAWN CLOSED BOARDED TIMBER FENCE.
	1.5M F 1.5M HIGH ROUGH SAWN CLOSED BOARDED TIMBER FENCE.
	1.2M S 1.2M HIGH OPEN SLAT TIMBER FENCE.
	1.2M F 1.2M HIGH ROUGH SAWN CLOSED BOARDED TIMBER FENCE.
	RW RETAINING WALL (INDICATIVE. REFER ENGINEERING DOCUMENTATION FOR DETAILS).

LANDSCAPE SCHEDULE OF AREAS:	
SITE AREA:	402.55 M <sup>2</sup>
PERMEABLE AREA:	157.8 M <sup>2</sup> (39.20%)
CONCRETE:	44.5 M <sup>2</sup>
EXPOSED AGGREGATE:	38.4 M <sup>2</sup>
GARDEN:	66.2 M <sup>2</sup>
LAWN:	79.6 M <sup>2</sup>
STONES:	12 M <sup>2</sup>
FENCE '1.8M F':	10.6 LIN. M
FENCE '1.2M S':	21.6 LIN. M

-FENCE LENGTH EXCLUDES GATES. ALL GATES ARE BLACK POWDERCOATED.  
 - ALLOW FOR 100X50 H5 GARDEN EDGING AS DETAILED.  
 - ALL RETAINING WALLS, BATTER BANKS, FENCING HEIGHTS AND M<sup>2</sup> AREAS ARE SUBJECT TO FINAL FINISHED GROUND LEVEL HEIGHT AND ARE SUBJECT TO CHANGE.