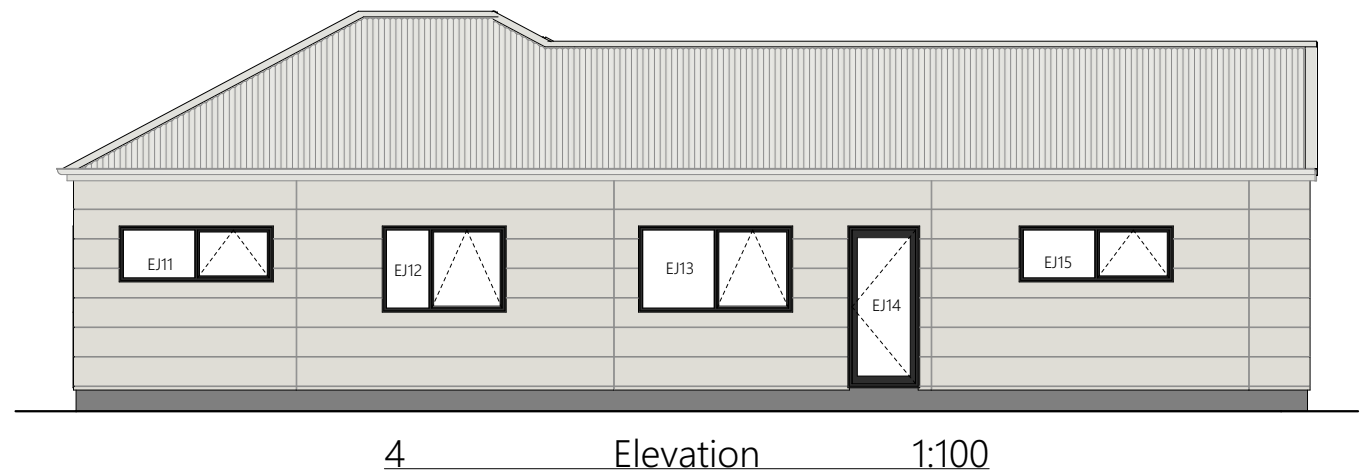
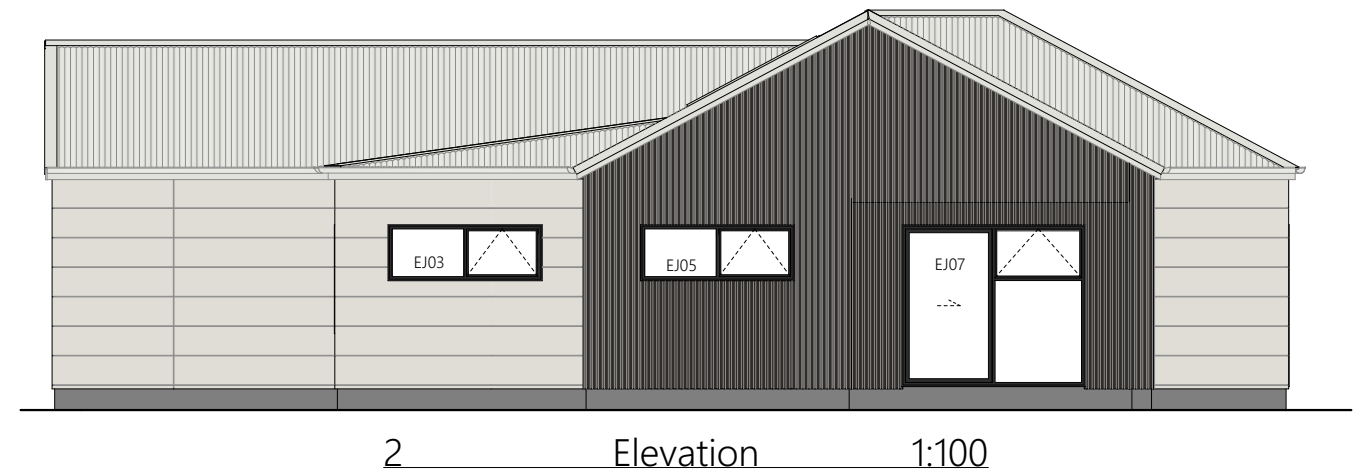
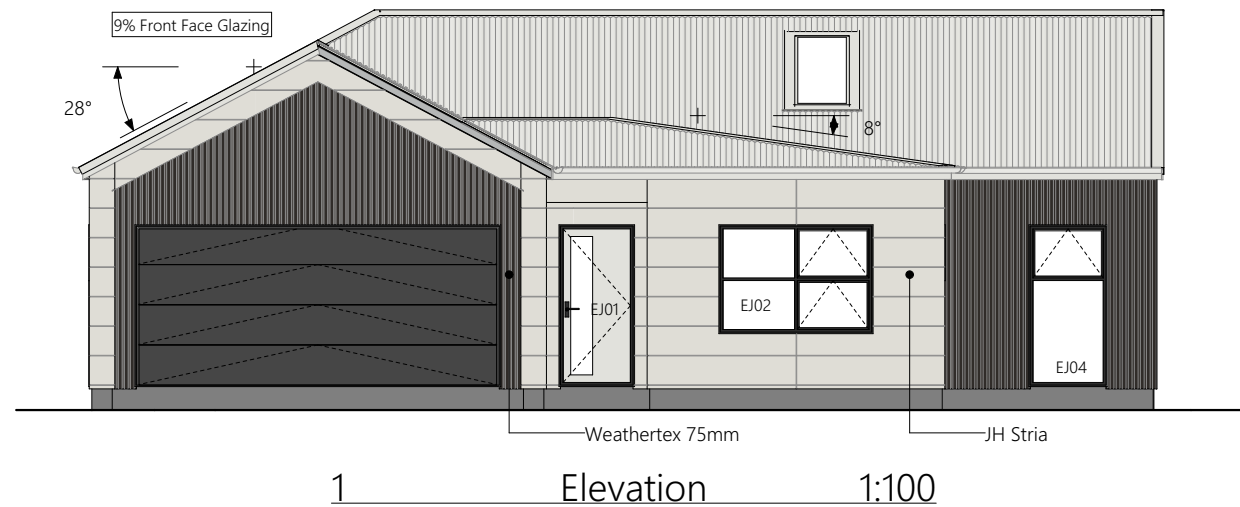


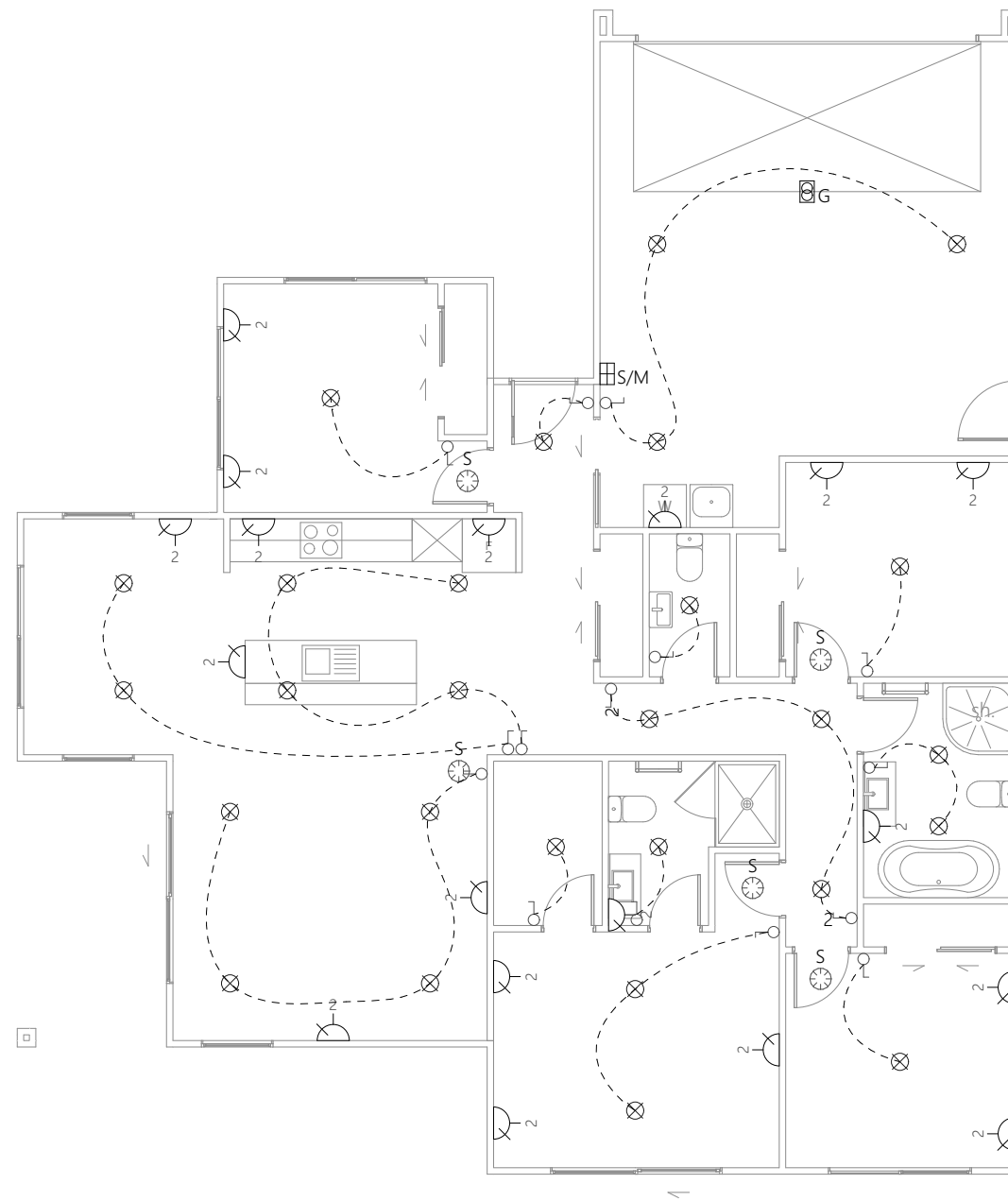
Lot: 76

Floor Plan




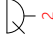



Floor Area: 165.5m²
Cladding 1: Weathertex
Cladding 2: JH Stria
Roofing: Corrugate

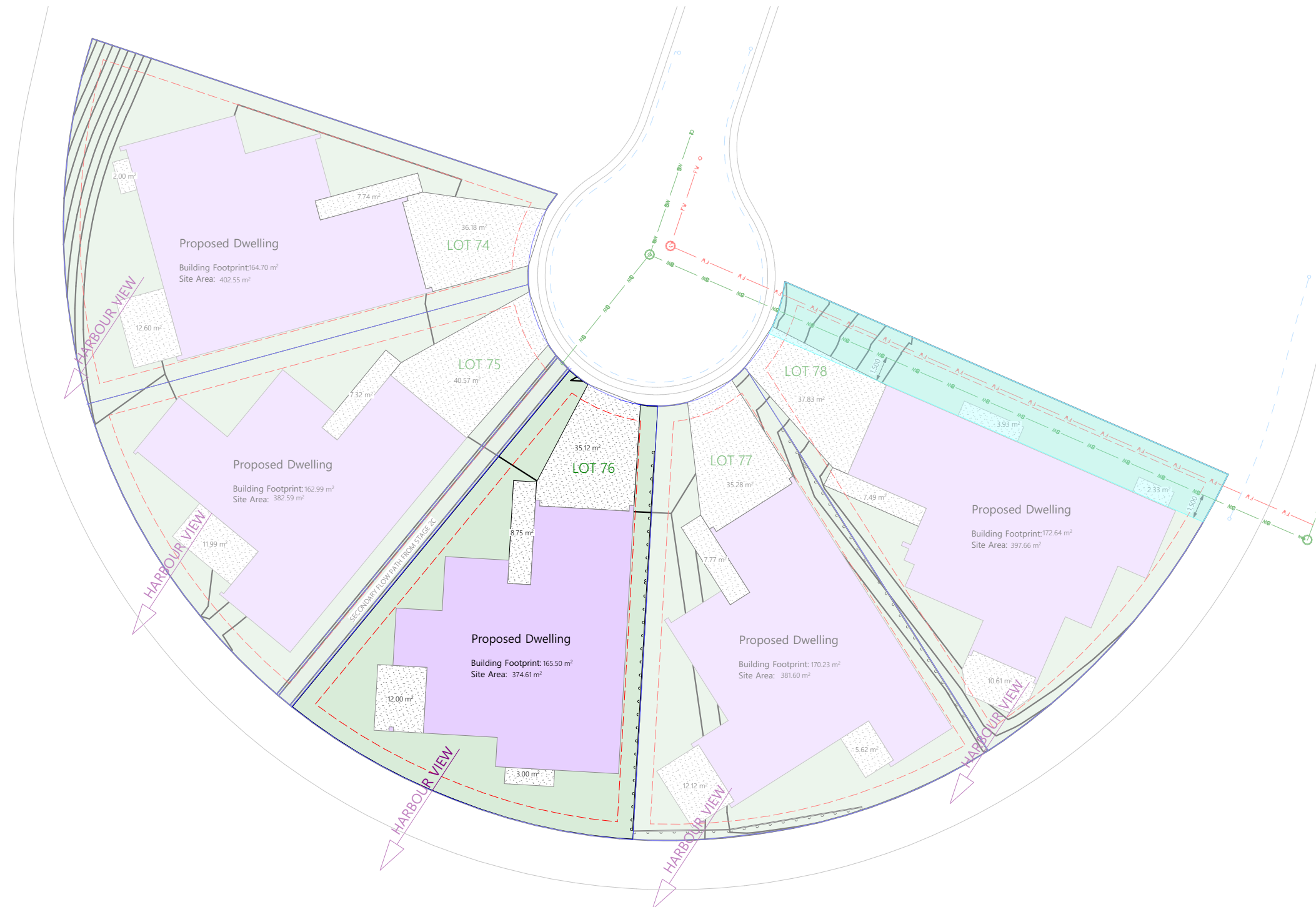
Tommy Laybourn
Licensed Real Estate Salesperson
027 379 7385





Electrical Legend

-  Light switch
-  Two way light switch
-  Recessed downlight
-  Power point
-  Smart Meter
-  Garage door motor
-  Smoke detector





| LEGEND | |
|--|--|
| | KARAEHE - GRASS |
| | RAIMA- CONCRETE. BRUSH FINISH |
| | EXPOSED AGGREGATE FINISHED CONCRETE |
| | KŌWHATU- STONES (PERMEABLE) |
| | INDICATIVE BATTER BANK. REFER DOCUMENTATION BY OTHERS FOR DETAILS. |
| | PAVERS (SHOWN INDICATIVELY) |
| | IPUPARA/ HANGARUA - SERVICE AREA FOR RUBBISH/ RECYCLING BINS |
| | POUAKA RETA- LETTERBOX |
| | WASHING LINE |
| | 1.8M F 1.8M HIGH ROUGH SAWN CLOSED BOARDED TIMBER FENCE. |
| | 1.5M F 1.5M HIGH ROUGH SAWN CLOSED BOARDED TIMBER FENCE. |
| | 1.2M S 1.2M HIGH OPEN SLAT TIMBER FENCE. |
| | 1.2M F 1.2M HIGH ROUGH SAWN CLOSED BOARDED TIMBER FENCE. |
| | RW RETAINING WALL (INDICATIVE. REFER ENGINEERING DOCUMENTATION FOR DETAILS). |
| <p>LANDSCAPE SCHEDULE OF AREAS:</p> <p>SITE AREA: 374.61 M²</p> <p>PERMEABLE AREA: 131.4M² (35.07%)</p> <p>CONCRETE: 45 M²</p> <p>EXPOSED AGGREGATE: 32.6 M²</p> <p>GARDEN: 22.1 M²</p> <p>LAWN: 98 M²</p> <p>STONES: 11.3 M²</p> <p>FENCE '1.8M F': 8.5 LIN. M</p> <p>FENCE '1.5M F': 3.2 LIN. M</p> <p>FENCE '1.2M S': 20 LIN. M</p> <p>-FENCE LENGTH EXCLUDES GATES. ALL GATES ARE BLACK POWDERCOATED.</p> <p>- ALLOW FOR 100X50 H5 GARDEN EDGING AS DETAILED.</p> <p>- ALL RETAINING WALLS, BATTER BANKS, FENCING HEIGHTS AND M² AREAS ARE SUBJECT TO FINAL FINISHED GROUND LEVEL HEIGHT AND ARE SUBJECT TO CHANGE.</p> | |