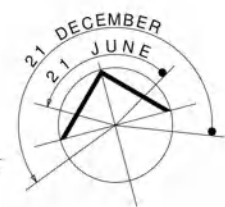
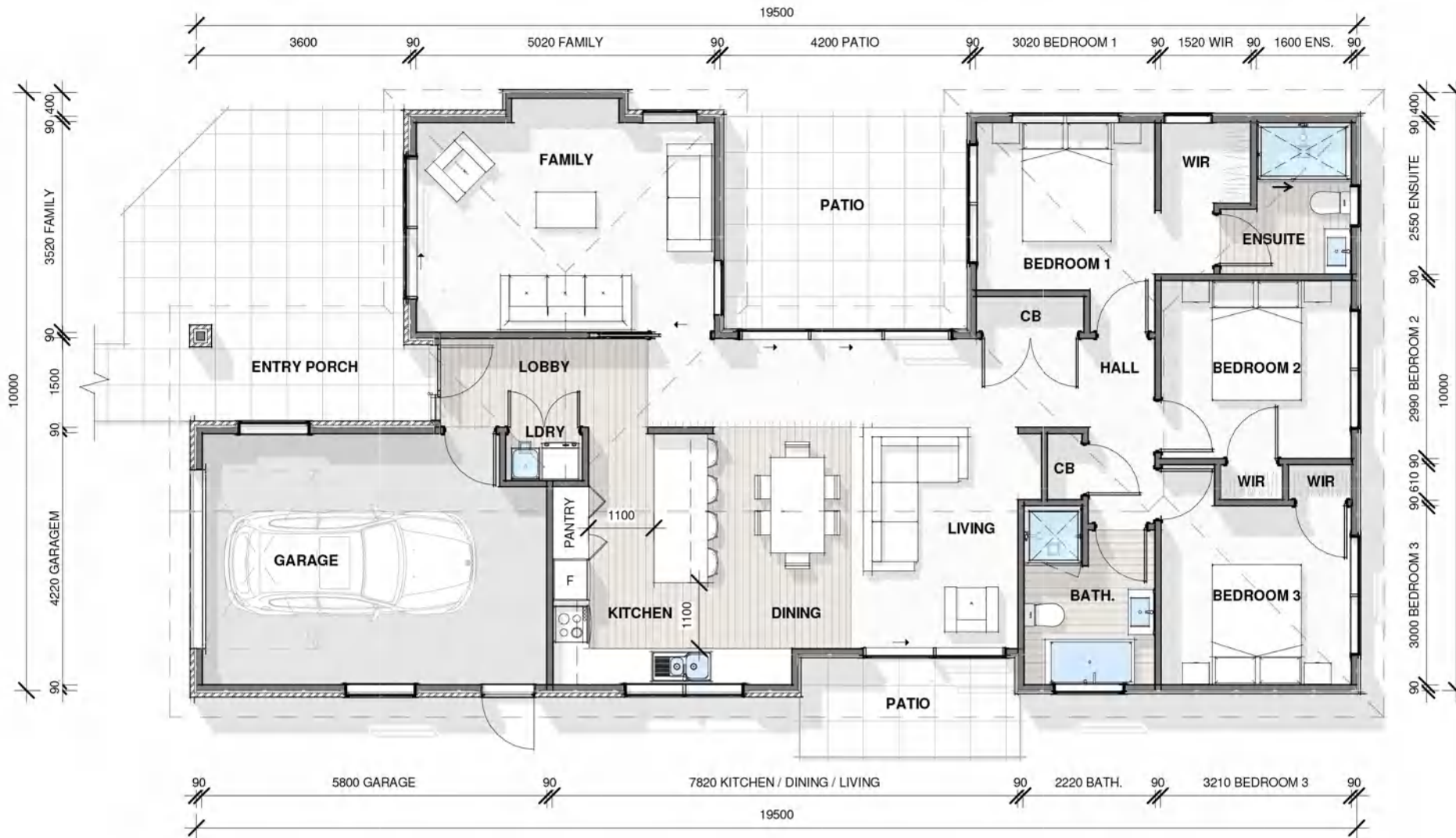




LOT: 18 (TYPE E)
1041A High Street,
Avalon







Floor area: 150.8m²

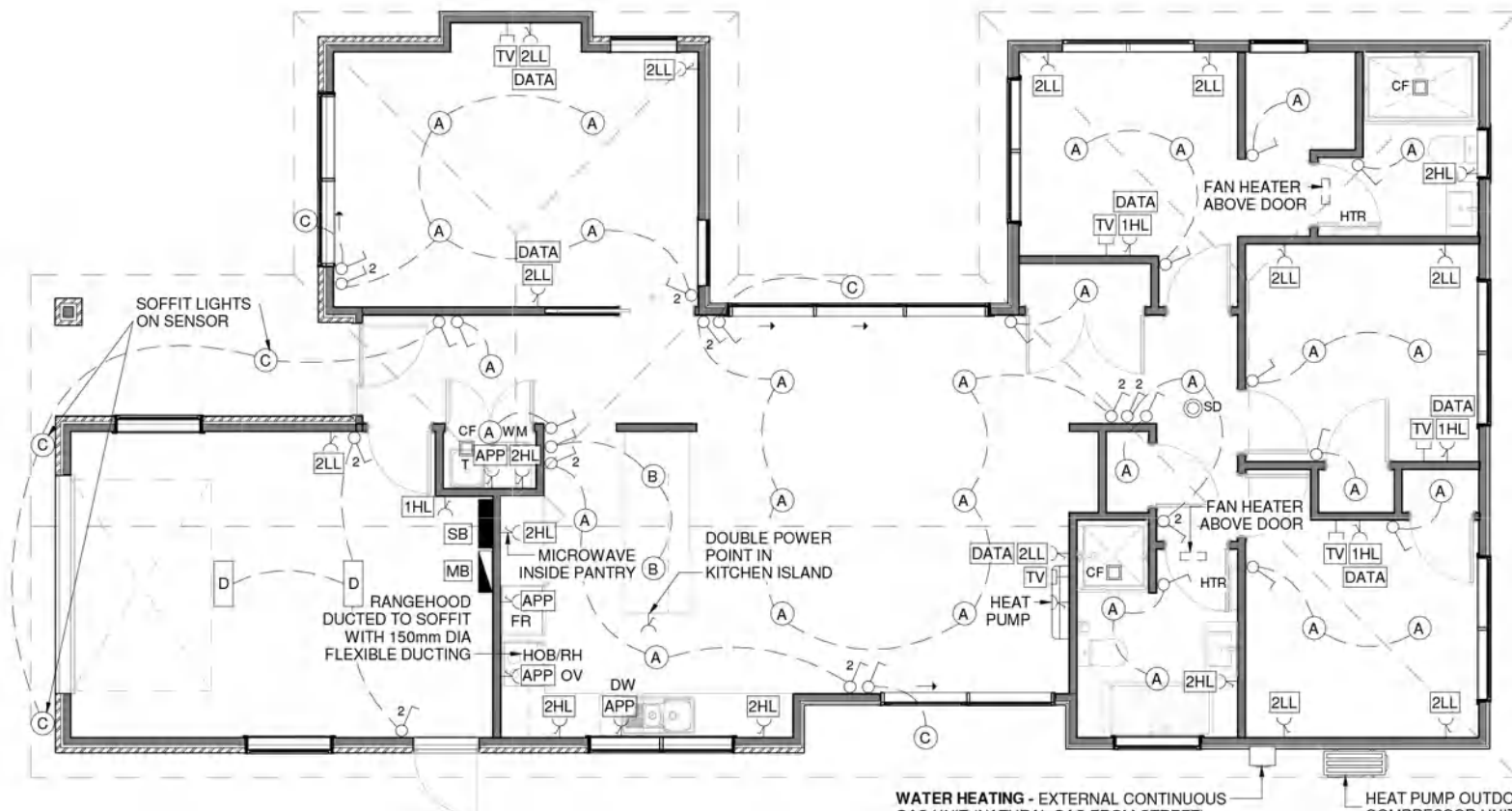
Site area: 279m²



Primary wall cladding: Brick veneer (stretcher bond)

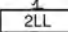
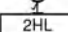
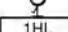
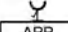
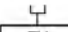
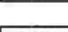
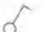

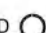
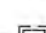
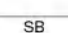

Feature wall cladding: Painted horizontal bevelback weatherboards (mitred corners with soakers)

Roof cladding: Corrugated profile

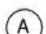





WATER HEATING - EXTERNAL CONTINUOUS GAS UNIT (NATURAL GAS FROM STREET)
HEAT PUMP OUTDOOR COMPRESSOR UNIT

LEGEND - ELECTRICAL

-  DOUBLE POWER SOCKET - LOW LEVEL (LL) 440 AFFL
-  DOUBLE POWER SOCKET - HIGH LEVEL (HL) 1200 AFFL
-  SINGLE POWER SOCKET - HIGH LEVEL (HL) 1200 AFFL
-  APPLIANCE POWER SOCKET
-  TV AERIAL OUTLETS
-  DATA / TELEPHONE OUTLETS
-  LIGHT SWITCH - 1 WAY
-  LIGHT SWITCH - 2 WAY
-  SD SMOKE DETECTOR - 1/ HARD WIRED DETECTOR WITHIN 3 METERS OF ALL BEDROOM DOORS
-  CF CEILING EXTRACTOR FAN - ON BATHROOM, ENSUITE AND LAUNDRY
*WEISS FV110 IN-LINE EXTRACTOR FAN ON TIMER SWITCH DUCTED TO SOFFIT WITH 150mm DIA FLEXIBLE DUCTING
-  SB SWITCH BOARD / DATA HUB
*FIBRE FROM DATA HUB TO OUTSIDE CONNECTION POINT
-  MB METER BOX
*SMART METER (DOESN'T NEED TO BE OUTSIDE)

LEGEND - LIGHTING

-  (A) RECESSED LED DOWNLIGHT - TYPE IC RATED * INSULATION CAN BE INSTALLED OVER THE TOP OF THE RECESSED LUMINAIRE
-  (B) PENDANT LED LIGHTS - REFER TO CLIENT SPEC. FOR SELECTIONS
-  (C) EXTERIOR LIGHT SOFFIT MOUNTED
-  (D) LED BATTEN LIGHTS FOR GARAGE

